

# kaisertech

## Product Guide v.2.0

Certified Management System – ISO 9001:2015

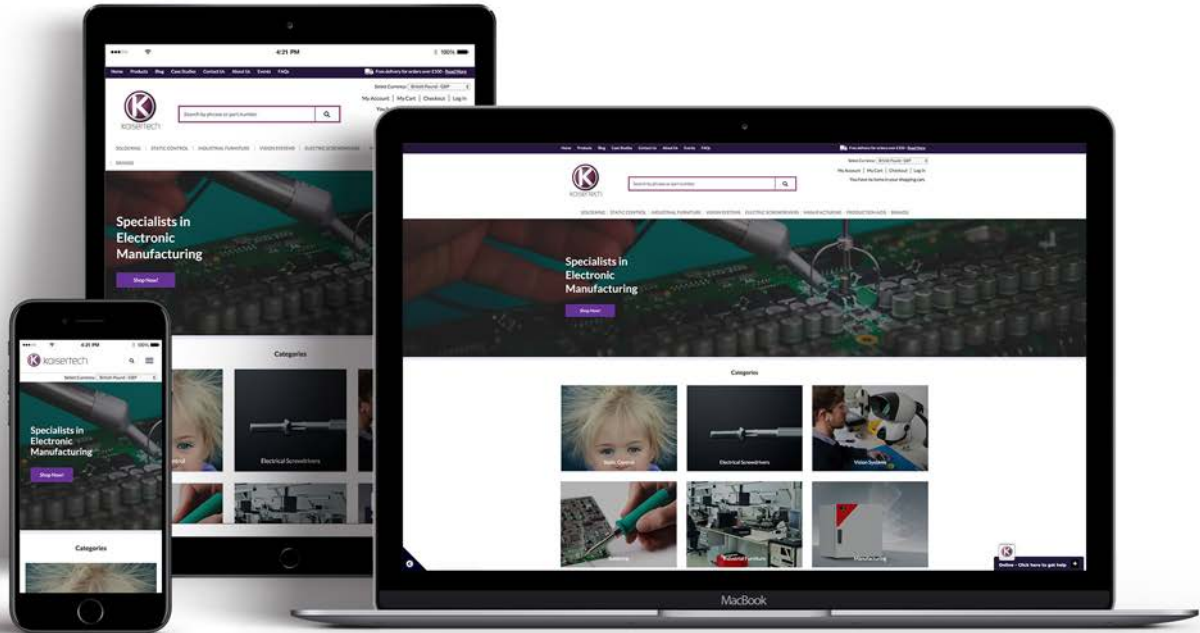


# Enjoy discovering & exploring the latest technologies with us...

Our company's key products include equipment for soldering & rework, vision inspection, powered screwdrivers, industrial furniture, dummy components, static control, fume extraction, component preparation, tools, service aids, humidity cabinets, environmental test chambers and electrochemicals.

Some of our major brands include:

- JBC Tools
- Hios
- Vision Engineering
- Apollo Seiko
- Topline
- Binder
- Treston
- Simco
- Bosch
- Purex
- Ambersil
- Wiha
- Dr Storage
- Quick
- Sievi
- Mountz
- Dino-lite
- SSI Schäfer
- Lindström
- Guyson
- Corstat
- Piergiacomi
- C.K Tools
- Meiji Techno



# See our full range on Mobile | Tablet | Desktop

If you don't see the item you need, don't worry, view us online at [www.kaisertech.co.uk](http://www.kaisertech.co.uk) to see our extensive range of products and prices.

# Contents

## 6 Hand Soldering

- 7 JBC RMSE-2D Station
- 8 JBC CD-2BE Station
  - JBC CP-2E Micro Tweezers
  - JBC CA Solder Feed Station
  - JBC CS Desoldering Station
- 9 JBC NASE-2C Nano Rework
- 10 JBC JTSE-2A Hot Air Station
  - JBC PHS-2KB IR Preheater
- 11 JBC DDSE Rework Station
  - JBC CLMB-PA Tip Cleaner
  - JBC SC-C Cartridge Stand
- 12 JBC T245 Handpiece
  - JBC T210 Handpiece
  - JBC PA0120A Tweezers
  - JBC AP250-A Solder Feed Ion
- 13 JBC Cartridge Range

## 14 Ionisation

- 15 Simco Aerostat XC
  - Simco Ionizing Blow-off Gun
  - Simco Aerostat PC
- 16 Simco Aerostat Guardian
- 17 Simco FMX-004 Field Meter
  - Simco Aerostat XC2

## 18 Static Control

- 19 ESD Polo
  - ESD Lab Coat
  - Sievi Viper Shoes
- 20 ESD Band & Coiled Set
  - ESD Bonding Plug
  - ESD Rubber Matting
  - ESD Heel Grander

- 21 Pink ESD Open Top Bag
  - Shielding Bags
  - Moisture Barrier Bags
- 22 Vacuum Sealing Machine
  - Desiccant Bags
  - Humidity Indicator Cards
- 23 SSI Schaefer Tote Boxes
  - Picking Bins
  - Transit Packs
  - Nikko Racks

## 24 Industrial Furniture

- 25 Premium ESD Workstation
- 26 ESD Wire Shelves
  - Wheel Drawer
  - ESD Trolley
- 27 ESD Clean Room Chair
  - ESD Chair
  - ESD Polyurethane Chair
  - ESD Vinyl Stool
- 28 Classic ESD Workstation
  - ESD Corner Workstation
- 29 Treston Packing Bench
  - Movable ESD Upright Workstation

## 30 Vision Systems

- 31 Vision Engineering Evo Cam II
- 32 Vision Engineering Lynx
  - Vision Engineering Mantis
- 33 Dino-Lite AM7915MZTL
  - Microtec Microscope

## 34 Electric Screwdrivers

- 35 Hios BLG-5000BC1 Electric Screwdrivers
  - Hios CL-7000 Electric Screwdriver
  - Hios BL-7000 Electric Screwdriver
- 36 Hios Digital Torque Meter
  - Tool Spring Balancer
  - Hios Screwfeeder
  - Hios Driver Stand
- 37 Bosch BT-Exact Pistol Driver
  - Bosch BT-Angle Driver
  - Bosch C-Exact Straight Driver
- 38 Hios Driver Bit
  - Hex Driver Bit
  - Pozi Driver Bit
  - Torx Driver Bit

## 39 Manufacturing

- 40 Apollo L-Cat Evo
- 41 Purex FumeCube
  - Purex System 200i
  - Dr Storage Dry Cabinet
- 42 Topline Dummy Components
- 43 Guyson Ultrasonic Bath
  - Guyson Bench Top Ultrasonic Bath
  - Binder Stress Testing Chamber
- 44 CAB Maestro 4S PCB Separator
  - CAB Hektor 2 Off-Cut Remover
  - CAB Maestro 2 PCB Separator
  - CAB Maestro Separator

## 55 Production Aids

# Hand Soldering

Kaisertech stock an extensive range of JBC soldering products, including soldering stations, hot air stations, desoldering and rework stations, control units, fume extractor units, stands and replacement tips/ cartridges. In addition to JBC, we also sell Apollo Seiko automated soldering robots and accessories, quick rework stations and much more!

# JBC RMSE-2D Complete Soldering Rework Station with Electric Pump

SKU: 415-RMSE-2



- This unit from JBC Soldering is by far the quickest and safest solution for soldering and rework, also including the use of Hot Air.
- It consists of stackable modules and all the necessary accessories to make your job easier.
- It works with the JBC Exclusive Heating System and the Intelligent Sleep & Hibernation Modes.
- It features all the Excellence range benefits and the JT-SD Stand that guarantees the Auto-Stop function when the heater is at rest.
- The RMSE works simultaneously with the DR560 Desoldering Iron, the T245 Handle, and the JT-TA Heater Hose Set and is compatible with most JBC tools.

## JBC CD-2BE Soldering Station

SKU: 415-CD-2BE



## JBC CP-2E Micro Tweezers

SKU: 415-CP-2E



## JBC CA Solder Feed Iron

SKU: 415-CA-2E



## JBC CS Desoldering Station

SKU: 415-CS-2E





# JBC NASE-2C Nano Rework Station

SKU: 415-NASE-2C



- The best solution for repairing very small- sized components requiring the highest precision such as chips 0402, 0201, 01005, etc.
- It works simultaneously with the NT115 Nano Handpiece and the NP115 Steady Nano Tweezers.
- The short distance from the tip to the handle offers maximum control even when using a microscope.
- The NASE-C comes with the new Temperature Dynamic Profiles functionality.
- The use of these profiles allows you to control the temperature of the component during all the phases of the soldering process, emulating the heating process in a reflow oven.
- Cartridges included:
  - C115-101 x1
  - C115-103 x1
  - C115-105 x2
  - C115-107 x1
  - C115-112 x1
  - C115-113 x2

## JBC JTSE-2A Hot Air Station

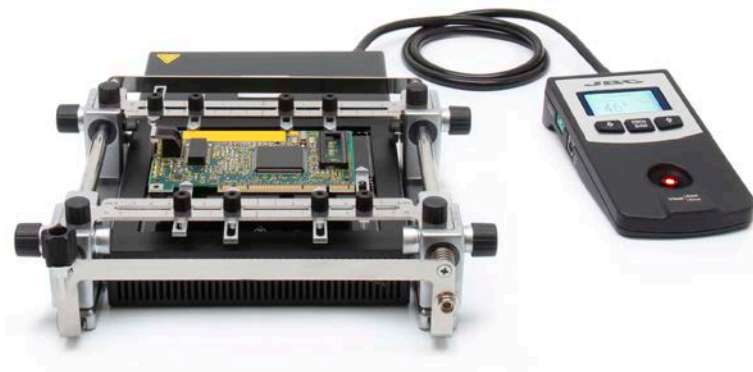
SKU: 415-JTSE-2A

- This is a high-powered hot air station for repairing all types of SMDs quickly and safely, including the biggest QFPs and PLCCs
- Two work modes
- You can set the temperature values and air flow rate manually or by creating your own profiles (up to 25).
- Control thermocouple
- Read the temperature at a specific point on the PCB with the control thermocouple. It helps protect the components or a specific area on the PCB and provides greater precision when regulating the temperature.
- Auto-stop function
- A safety measure which ensures the heat is automatically cut off when the tool is in the JT-SD stand.
- Supplied with the extractor desk.



## JBC PHS-2KB IR Preheater Set

SKU: 415-PHS-2KB



- This is a complete system for preheating multilayer PCBs by applying infrared.
- It is ideal for repetitive jobs since the system is able to run a specific temperature profile without the need of a thermocouple.
- JBC offers you 3 predefined temperature profiles and 10 more to personalise.
- Using the console, you can select the mode of operation: by power or by temperature.
- The Heater Unit works with 1 or 2 heating zones and the PCB Support has 3 adjustable heights.

## JBC DDSE-2B Rework Station with Electric Pump

SKU: 415-DDSE-2B

- A complete solution for fast and safe PCB repair.
- The DDE 2 Tools Control Unit manages the tip temperature and the MSE Electric Desoldering Module sucks the solder.
- It works with the JBC exclusive heating system and the intelligent sleep & hibernation modes.
- It features all the Excellence range benefits such as station customization, full control of soldering processes and remote work management.



## JBC CLMB-PA Senior Tip Cleaner non-metal

SKU: 415-CLMB-PA

- This automatic cleaner improves thermal transfer of the tip in only 1 second, which means you save time and optimize production.
- It works by means of a sensor. The operator places the tip at the opening and two motorized brushes will clean it uniformly.
- The splashguard helps keep the bench always clean and free of Foreign Object Debris (FOD).
- The CLMB-PA is very easy to maintain. The solder collector tray can be emptied and re-used with no wear and tear.

## JBC SC-C Extractor-Inserter Cartridge Magazine

SKU: 415-SC-C

- Magazine for an easy and safe exchange of C210 cartridges and C245 cartridges.
- Holds up to 12 models of various sizes and shapes. This means you can work in multiple jobs at the same time.
- Offers a perfect view of the tips for quick selection.
- Its weight guarantees the maximum stability when changing cartridges, even single-handed.



## JBC General Purposes Handpiece

SKU: 415-2245



## JBC Precision Purpose Handpiece

SKU: 415-2210



## JBC PA-120A Micro Tweezers

SKU: 415-PA-A



## JBC AP250-A Solder Feed Iron

SKU: 415-AP250-A



# JBC Tips



JBC C115 CARTRIDGE RANGE



JBC C120 CARTRIDGE RANGE



JBC C130 CARTRIDGE RANGE



JBC C210 CARTRIDGE RANGE



JBC C245 CARTRIDGE RANGE



JBC C250 CARTRIDGE RANGE



JBC C360 CARTRIDGE RANGE



JBC C470 CARTRIDGE RANGE



JBC C560 CARTRIDGE RANGE

# Ionisation

Kaisertech are pleased to offer a range of ionisers. Brand leader Simco offer customers a large range of state of the art ionisers which include overhead ionisers, bench top ionisers, blow off ionising guns and test equipment. For customers that are just looking for blow off ionising guns/snakes and test equipment, then Quick offer a competitive range.

## **SIMCO Aerostat XC Extended Coverage Benchtop Ioniser 230V**

SKU: 185-4009044



## **SIMCO Ionizing Blow-off Top Gun 3, 14' Cable/Hose Assembly, 230V**

SKU: 185-4009895

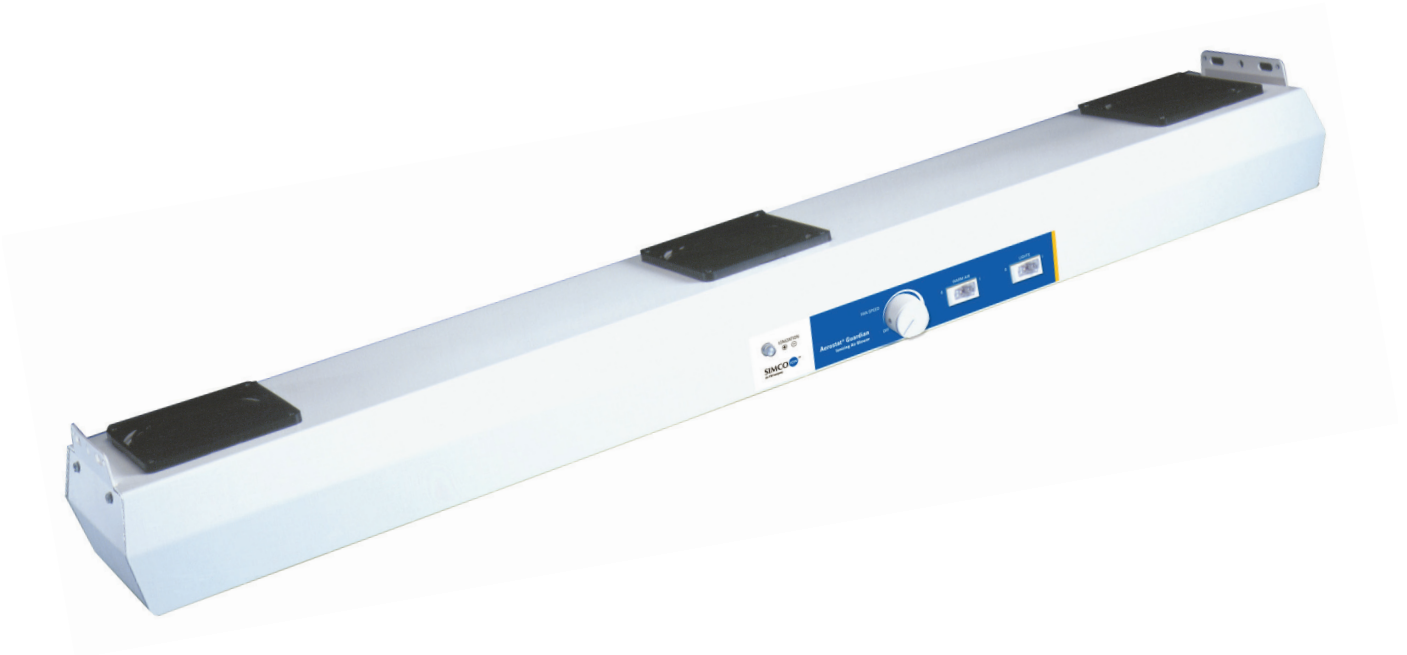
## **SIMCO Aerostat PC with Heater, 230V, 50 Hz, CE**

SKU: 185-4008087



# SIMCO Aerostat Guardian 3-fan Overhead Ioniser 230V

SKU: 185-4009890



## Product Information:

- For use in electronic assembly, semi-conductor test and medical device assembly and packaging
- Equipped with overhead lighting
- Switchable integral heater for operator comfort
- AC technology for stable performance
- Inherently balanced at  $\pm 5V$
- Adjustable airflow for complete control
- Ionisation verification light
- Patented built in emitter point cleaner
- Discharge time 6 seconds at 450mm (18")
- Dimensions 1090x100x170mm
- Weight 7.3kg
- Conforms to IEC 61340-5-1



## SIMCO FMX-004 Electrostatic Field Meter

SKU: 115-FMX-004

- Compact and lightweight electrostatic field meter used for locating and measuring static charges
- Easy to read, easy to use operations
- Measures static voltages +/- 30kV (+/- 1kV) for a distance of 25mm (1")
- Ion voltage balance can now be measured to +/- 300V
- Results are simultaneously displayed numerically and in a bar graph format
- Two LED guide ring lights help position the fieldmeter at the right distance from a charged test object
- Range light assures accurate and repeatable measurements
- The conductive case and ground snap facilitate grounding for accurate measurement
- The circuitry has been designed to make measurements in areas using air ionisation



## SIMCO Aerostat XC2

SKU: 185-XC2



Simco-Ion's Aerostat XC2 Blower provides complete wide area ionization protection and is designed and built for reliable, long-term static control. The XC2 offers outstanding coverage for larger areas with <12 second discharge times at 6 feet (1.8m) distance from the face of the blower. The weight-saving design allows the Aerostat XC2 to be mounted above the work surface, which is especially effective for flat-panel display module assembly.

- Large, near symmetric ionization area coverage
- Weight-saving design
- Easy-to-use, built-in emitter cleaner
- $\pm 10V$  self-balancing ("Micro pulse") technology
- Local alarm LEDs, Facility Monitoring System (FMS) connection and optional audible alarm
- Integrated heater for warm air flow

# Static Control

Safeguard against electrostatic discharge (ESD) when using electric equipment by dissipating charges away from the user to establish a path to ground controlling for static in the production area. We stock a range of ESD static control, static handling and anti-static packaging products - including test equipment, ESD footwear, workbenches, tote boxes, component boxes, bags and sealers.





**ESD Anti-Static Polo Shirt | Short Sleeves -  
Blue/Grey - Sizes: S-XL**

SKU: 145-PL48

**ESD Anti-Static Lab coat | 3/4 Length -  
White/Blue - sizes: S-XL**

SKU: 145-UX30



**SIEVI Viper 3 S3 Shoes**

SKU: 145-44-52171-302-92M

## ESD Anti-static Band Fabric Set Coiled Cord, Stud to Stud

SKU: 100-WS10-SS



## ESD Earth Bonding Plug 3x 10mm Studs

SKU: 100-EBP2-310



## ESD Anti-static Rubber Matting, Textured Finish, Smooth Finish 1.2m x Linear Meter

SKU: 140-RM



## ESD Anti-static Ground Heel 1 Meg Adjustable with Velcro Fastening

SKU: 100-HG3





**Pink ESD Open Top Bags**  
**100per Pack - various sizes available**

SKU: 105-PK

**ESD Anti-Static Shielding Bags**  
**100per Pack – various sizes available**

SKU: 105-4150



**Moisture Barrier Bags**  
**100per Pack - various sizes available**

SKU: 105-3750

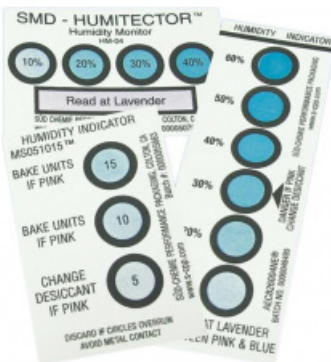


## HENKELMAN Vacuum Packaging Machine Boxer 52

SKU: 105-VSM-B52

## Desiccant Bags 1 unit 25g pack of 500

SKU: 105-MD-1DU-TM



## Humidity Indicator Cards

SKU: 105-HC

## SSI SCHAEFER ESD Conductive Tote Boxes - various sizes available

SKU: 150-SB



## Conductive Picking Bin - various sizes available

SKU: 135-SB



## Transit Packs - various sizes available

SKU: 135-3



## NIKKO Adjustable PCB Racks

SKU: R25



# Industrial Furniture

Kaisertech's range of ESD industrial furniture provides protection for electronically sensitive components. ESD chairs, workstations, workbenches, cabinets and racking available.





# KAISERTECH Premium ESD Workstation

SKU: 127-RF-001-12075-9003

- Premium construction was designed for industries where ergonomics and comfort play a special role. An example might be electronic industry or laboratories. This construction can be easily adapted to the needs of operator according to the activity (sitting or standing work), or to changing work conditions.
- Modularity
- One of the most important advantages of Kaisertech furniture is their modularity. Modular construction of Kaisertech furniture divides the whole system into interchangeable units (modules), which are produced and sold independently. These individual elements can also be used in other modular systems of industrial furniture.
- Ergonomics and modularity for better functionality
- With the possibility of a flexible development, Kaisertech furniture can be used in many branches of industry, and in places like storehouses, production lines, workshops, tool shops, laboratories and lecture rooms. Moreover, there is an option of exclusive designs for individual companies and of their subsequent extensions, which arise with the customer's expanding needs.
- Various sizes available.



## KAISERTECH ESD Workstation Classic

SKU: 127-RF-002-12075-9003

- Classic design is an economical solution designed for works not requiring heavy load. This type of construction is recommended for use in any sitting works.
- One of the most important advantages of Kaisertech furniture is their modularity. Modular construction of Kaisertech furniture divides the whole system into interchangeable units (modules), which are produced and sold independently. These individual elements can also be used in other modular systems of industrial furniture.
- With the possibility of a flexible development, Kaisertech furniture can be used in many branches of industry, and in places like storehouses, production lines, workshops, tool shops, laboratories and lecture rooms. Moreover, there is an option of exclusive designs for individual companies and of their subsequent extensions, which arise with the customer's expanding needs.
- Various sizes available.



## KAISERTECH ESD Premium/Basic Corner Modules

SKU: 127-PRE/BAS-CORNER

Corner module provides the ability to connect two PREMIUM tables. As a result, users obtain one integrated workstation contributing to improvement of space management.

- Comes together with ESD table top
- Max load capacity: 100 kg
- Stepless height adjustment: 670 - 1120 mm
- Additional supporting leg provided as an option for higher load capacity
- CLASSIC Side AND Corner Module
- Comes together with ESD table top
- The ideal solution for increasing the working space
- Maximum load capacity: 100 kg
- Attachable to both left and right side
- Quick installation - main table top removal not needed



## TRESTON Packing Table 1800x900

SKU: 125-C12041213

- Product measurements: 1830 x 960 x 1700-1960 mm
- Max load: 300kg
- Packing table with laminated table top
- Height adjustable
- Laminated table top
- 2 shelves, dividers



## KAISERTECH ESD Movable Upright Frame Workstation

SKU: 127-RF-098-20090-9003

Movable ESD upright frame is ideal for manufacturing facilities, workshops, laboratories and all these places where mobility is required for fast movement of parts and tools.

Thanks to modular design all 900 mm accessories are applicable.



**ESD Rack 3 Wire Shelves**  
**854x915x610mm (hwd)**

SKU: 125-CWSSP-ESD



**Wheel Drawer**

SKU: 127-RF-016-4566-9003



**ESD Trolley 970x915x610mm (hwd)**

SKU: 125-CWS-KIT3-ESD

## ESD Clean Room Vinyl Chair High 550-800mm

SKU: 110-300H



## ESD Chair High 580-850mm

SKU: 110-A9



## ESD Polyurethane Cleanroom Chair High

SKU: 110-412



## ESD Vinyl Stool High 550-800mm

SKU: 110-108



# Vision Systems

Kaisertech offers a large range of digital microscopes, bench magnifiers, inspection cameras and x-ray machines by reputable brands such as Vision Engineering, Nikon, Meiji and Bosch.



# VISION ENGINEERING Evo Cam II – Digital Microscope

SKU: 560-EVO-CAM-II

NEW!

An high definition digital microscope with stunning image quality, that combines optical excellence with ease of use and efficient workflows. EVO Cam II makes image capture and documentation simpler, faster and more reliable.

- Exceptional high resolution 1080p/60fps image quality
- Optical magnification up to 300x
- Stand alone, wireless or PC connectivity

## Stunning images. Exceptional simplicity

EVO Cam II digital microscope delivers excellent image quality to help uncover hidden details. Optical magnification up to 300x and full auto focus ensures ultra-sharp images at all times, EVO Cam II is optimised for quality control, testing, inspection and documentation.

Leading optical performance makes EVO Cam II a supremely powerful imaging solution with a range of objective lens options to ensure stunning results for any application. Exceptional simplicity minimises training requirement, making EVO Cam II a powerful and flexible tool, ideal for multiple users and production environments.

## Highlights

- Ultra-sharp image quality with full auto-focus
- Optical magnification range 1.7x -300x
- Maximum magnification with digital zoom 3600x
- Fast 60 fps provides clear images without motion blur
- Unique 360° inspection without the need to manipulate subjects under magnification
- Simplicity to view whole samples, or the smallest detail at the touch of a button
- Large field of view and long working distances
- Eliminate set-up time with up to 10 pre-sets
- Custom overlays to aid inspection
- Wi-Fi and USB 3.0 for fast image transfer
- Efficient dimensioning with virtual caliper and scalable grids
- Ideal for a wide range of applications including inspection of electronics, automotive, precision engineering, medical devices and plastic parts.





## VISION ENGINEERING Lynx Eyepiece-Less Stereo Inspection Microscope

SKU: 560-K-VE-LYNX

- The Lynx is a unique eyepieceless stereo inspection microscope for intricate tasks requiring high resolution stereo viewing. Its patented ergonomic design brings unrivalled levels of comfort and reduced operator fatigue, leading to an increase in quality and productivity.
- Lynx is a unique eyepieceless stereo microscope for intricate tasks requiring high-resolution stereo viewing.
- The Lynx stereo microscope utilizes Vision Engineering's patented Dynascope technology which offers the user advanced ergonomics by removing the need for restrictive eyepieces.
- The eyepieceless optics of Lynx significantly increase head freedom and eye relief, reducing operator stress and fatigue over long periods of time.
- The Lynx stereo zoom microscope is used in a wide range of industry applications including general manufacturing, electronics, precision engineering, medical devices, plastics and rubber.



## VISION ENGINEERING Mantis Elite 3D Visual Inspection Microscope

SKU: 560-K-VE-MANTIS-E

The Mantis Elite is an ergonomic eyepiece-less stereo microscope, offering superior optical performance with magnification options up to 20x, making it a perfect alternative to more traditional inspection stereo microscopes.

Mantis Elite is a patented 'eyepiece-less' stereo microscope, offering truly superb 3-D imaging and unparalleled levels of comfort, reducing operator fatigue and increasing quality and productivity.

Winner of numerous industry design awards, the outstanding ergonomic design is unrivalled by other inspection stereo viewers.

With magnification options up to 20x, Mantis Elite is the high performance stereo viewer of choice for a wide range of precision tasks requiring magnification.



## DINO-LITE AM7915MZTL - 10x-140x

SKU: 808-AM7915MZTL

With the Extended Dynamic Range (EDR) feature, the details of darker or brighter areas within the object can be revealed by stacking images at different exposure levels. The Extended Depth of Field (EDOF) feature automatically stacks images at different focus level to improve the depth of field on rough or uneven surfaces. The AMR function is of particular importance when the measurement functions are frequently used. Because of the built-in polarization filter this model is ideal when working with shiny or reflective objects such as metal, plastic, glass, jewellery, electronics, etc.

The main features of the AM7915MZTL are:

- 5 Megapixel Edge sensor
- Extended Depth of Field (EDOF)
- Extended Dynamic Range (EDR)
- 10-140x Magnification & Long working distance
- Automatic Magnification Reading (AMR)
- Adjustable polarizer
- Flexible LED Control (FLC)
- And more...



## MICROTEC HM-4 Body with Photo Tube & Pair of Focusing 25x eyepieces

SKU: 585-HM-425E

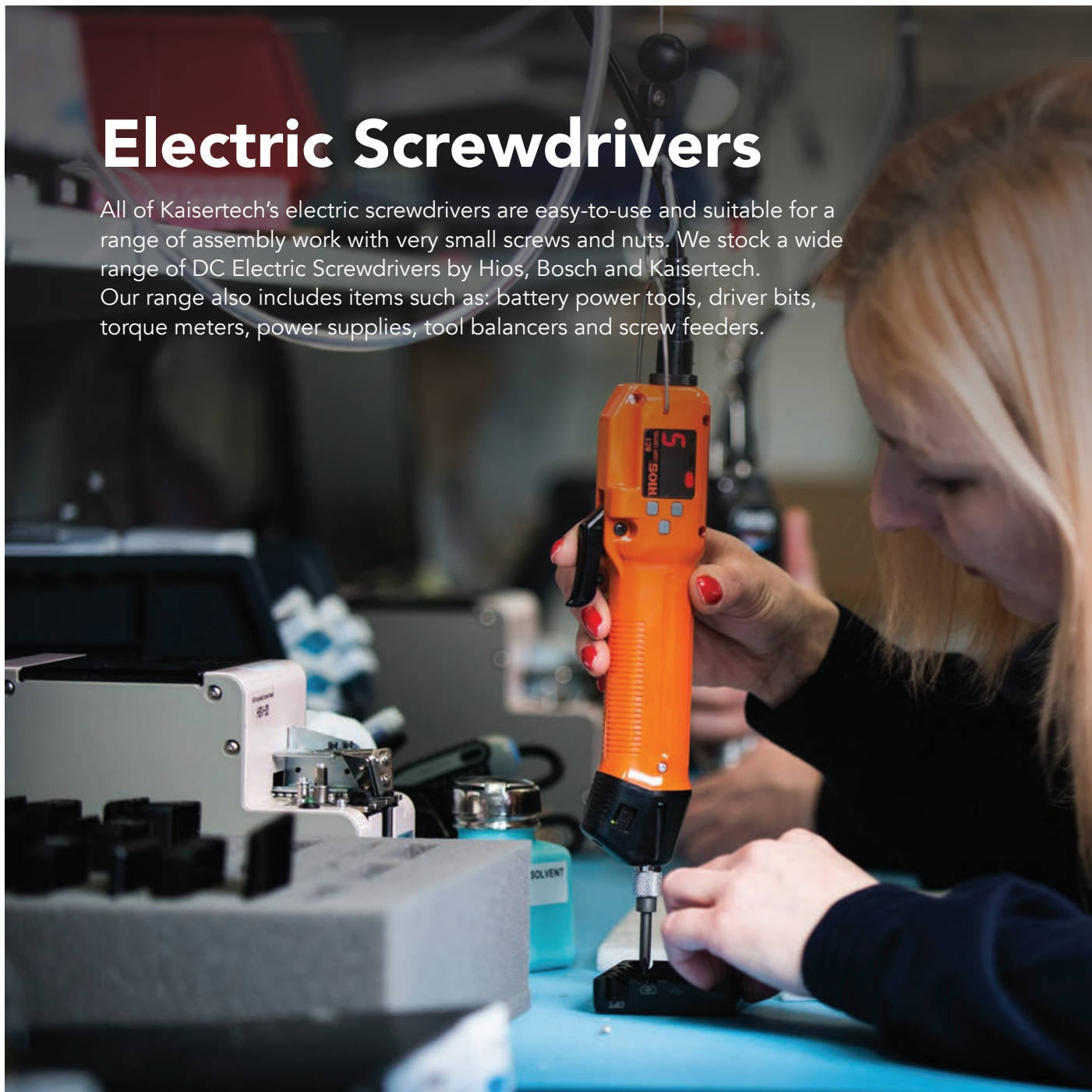
The Microtec HM-4 Zoom stereo microscope has a zoom ratio range of 6.4:1 with detent (click stops). Giving a possible magnification range of 3.5x-270x. It also has an integrated phototube. A selection of stands of either transmitted or reflected light as well as standalone light sources are available as are supplementary front lenses and eyepieces.

- Microtec HM-4 body with photo tube & 10x focusable eyepieces for 0.7-4.5 magnification
- Includes Pair of focusing 25x eyepieces
- The Microtec HM-4 stereo microscope has a built-in phototube and a zoom ratio range of 6.4:1. A selection of stands, supplementary front lenses and eyepieces are available, enabling a range of magnifications from 3.5x to 270x to be achieved.
- The HM-4 also incorporates a zoom lock and click stops on the zoom adjustment at factors of 1x, 2x, 3x & 4x.



# Electric Screwdrivers

All of Kaisertech's electric screwdrivers are easy-to-use and suitable for a range of assembly work with very small screws and nuts. We stock a wide range of DC Electric Screwdrivers by Hios, Bosch and Kaisertech. Our range also includes items such as: battery power tools, driver bits, torque meters, power supplies, tool balancers and screw feeders.



## HIOS BLG-5000BC1 Electric Screwdriver, 0.2 - 1.2Nm

SKU: 280-BLG-5000BC1

- No more overlooked tightening errors!
- It prevents human errors in operations! It supports accurate screw tightening and reduces the operator's fatigue.
- A conventional external screw counter is not required. This realizes low-cost introduction of new screwdrivers.
- The integration of the screwdriver and the counter is optimal for space-saving operations.



## HIOS CL-7000 Electric Screwdriver - Lever Start, 0.3 - 2.5Nm

SKU: 280-CL-7000-NLX

- Straight trigger start electric and reversible screwdrivers
- External torque adjustment
- Auto shut off
- Output Torque Range: Nm 0.3 - 2.5, lbf in 2.6 - 22, (kgf cm) (3 - 25)
- Speed 750rpm



## HIOS BL-7000 Electric Screwdriver - Two Way Start 0.7 - 2.8Nm

SKU: 280-BL7000X

- Brushless motor for less maintenance, longer life and less pollution
- New Two-way start, lever or push to start
- Easy Torque adjustment
- Auto shut off
- ESD safe as standard



## HIOS Digital Torque Meter HP-100, 0.15 - 10.00Nm

SKU: 280-HPN-100X-C1



## Tool Spring Balancer 1.0 - 2.0kg

SKU: 270-SB2.0



## HIOS Screwfeeder for Manual Operation

SKU: 280-HS



## HIOS Driver Stand - General Duty

SKU: 280-VMS40





## **BOSCH BT-EXACT 2 Pistol Driver Torque 0.6-2Nm Speed 600rpm**

SKU: 580-0-602-491-433

---

## **BOSCH BT-ANGLE EXACT 15 Torque 2-15Nm Speed 250rpm**

SKU: 580-0-602-491-650



## **BOSCH C-EXACT 2 Electric Screwdriver (Lever Start)**

SKU: 580-0-602-495-2030

## **HIOS Stepped Shank Cross Slotted 0 (1.5) 40mm BP-H4-0(1.5)-B-40**

SKU: 280-BP4015040



## **Hexagon Socket Head (Allen) 1/4" Hex Drive 1.5 x 50mm**

SKU: 230-1614



## **Pozidrive Bit 1/4" Hex Drive No.0 50mm**

SKU: 230-16199-00-50



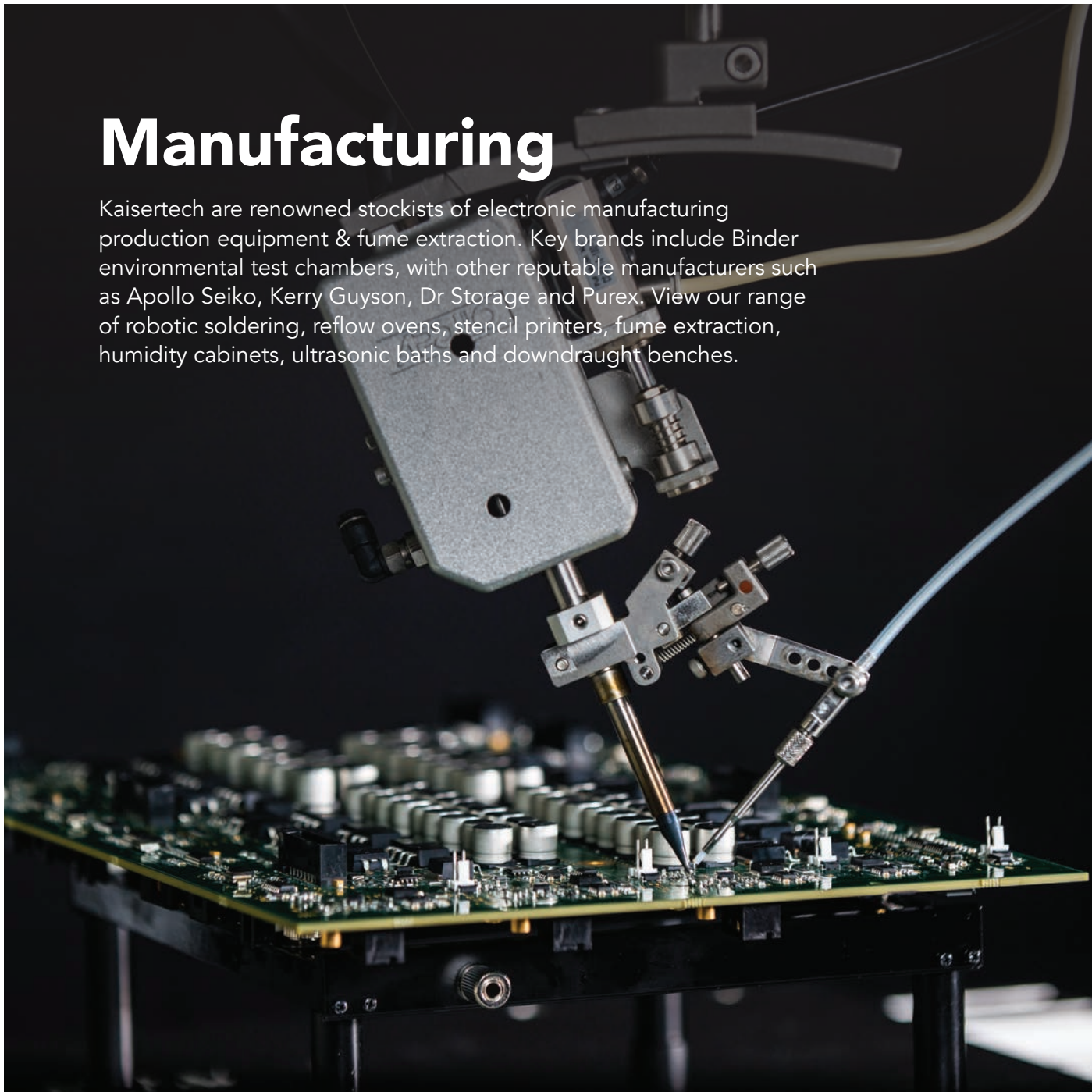
## **Torx bit 1/4" Hex Drive T10 50mm**

SKU: 230-1671-10-50



# Manufacturing

Kaisertech are renowned stockists of electronic manufacturing production equipment & fume extraction. Key brands include Binder environmental test chambers, with other reputable manufacturers such as Apollo Seiko, Kerry Guyson, Dr Storage and Purex. View our range of robotic soldering, reflow ovens, stencil printers, fume extraction, humidity cabinets, ultrasonic baths and downdraught benches.



# APOLLO L-CAT Evo Soldering Robot

SKU: 430-LCAT-EVO-4330



Gantry-type robotic soldering - Defining the soldering parameters is fast & simple due to the intuitive interface of the EVO robot. The EVO has evolved from a long line of selective solder robots.

Oxygen removal filter as standard - The L-CAT EVO is standard equipped with filters to remove oxygen in the atmosphere.

X & Y motors with high accuracy rotary encoders achieve 0.01mm resolution (repeatability 0.02 mm) with a maximum speed 750 mm/sec.

All of the cables are internally routed via the Z-axis head and will not tangle during rotation. The EVO has a program capacity of 100 programs and 100,000 points total to meet virtually all PCB soldering requirements. The soldering temperature can be customized inside each of the 300 soldering profiles to provide optimal quality & cycle time for virtually all applications.

The program capacity becomes 100 and 100,000 point to meet various soldering requirements. The soldering temperature can be entered individually inside 198 soldering parameter.





## PUREX FumeCube Fume Extraction for 1 Arm

SKU: 660-FC1

- Automatic electronic flow control - maintains a constant extraction rate even as the filter blocks
- Speed control (adjustable airflow)
- VariColour filter blocked warning system
- Low capital and running costs
- Quick change patented Labyrinth pre-filter delivers longer filter life

## PUREX System200i Fume Extraction Digital

SKU: 660-200I

This machine can cater for:

- Lasers (Coding & Marking)
- Inkjet Printers (Coding & Marking)
- 3 x 38mm Arms
- 2 x Cleancabs
- 2 x Cowls
- Up to 30 Tips



## DR. STORAGE Dry Cabinet 1200-6T with Turbo Dryers

SKU: 190-X2B-1200-6T

Dr. Storage is ideal for the following applications:

- Storing & drying ICs prior to placement.
- Drying and storing multilayer PCBs, either before or after placement.
- Humidity-free storage of film and other materials used in PCB fabrication.
- Effective prevention of oxidation of PCBs stored for bottom-side mounting after completion of topside mounting.
- Desiccant automatically regenerates, thus desiccant level is continuously maintained.



## GUYSON KERRY UCR525 Ultrasonic Bath

SKU: 350-UCR525

- Guyson's Kerry 525 UCR aqueous ultrasonic clean and rinse systems provide a heated ultrasonic cleaning tank, an immersion rinse tank weiring to drain, and a hand held spray for final rinse.
- Guyson M300 (300W) ultrasonic generators for powerful cleaning and long equipment life
- Robust construction with 316L polished stainless steel tank for durability
- Thermostatically controlled solution heating from 20°C to 80°C

## GUYSON KERRY MKC14 Ultrasonic Bath Tank

SKU: 350-80064

- Microprocessor controlled the MKC 14 (approx. 14 litres) ultrasonic cleaning bath allow the user to pre-set exact cleaning times and temperatures, ensuring the same high level of cleanliness every time.
- Simple 4 button membrane keypad with LCD panel
- Variable temperature control to maintain the bath contents between 20°C and 80°C in 1°C increments.
- Timer control allowing continuous or timed operation (6 secs to 1hr 40 mins).



## BINDER KMF 115 Constant Climate Chamber for Stress Testing

SKU: BINDER-KMF-115

- Temperature range: -10 °C to 100 °C
- Humidity range: 10 % RH to 98 % RH
- APT.line™ preheating chamber technology
- Humidity regulation with capacitive humidity sensor and vapor humidification
- Inner chamber made of stainless steel



## CAB Maestro 4S PCB Separator

SKU: 290-MAESTRO-4S



## CAB Hektor 2 Off-cut Remover

SKU: 290-8932145



## CAB Maestro 2 / 2M PCB Separator

SKU: 290-MAESTRO



## CAB Maestro 3E PCB Separator

SKU: 290-MAESTRO-3E



# TOPLINE Dummy Components

SKU: TOPLINE



Process coordination often requires components to be "sacrificed". Using TopLine dummy components is a cost-effective alternative.

TopLine is one of the largest producers of dummy components worldwide. With more than 1000 different components and model PCBs (also for lead-free technology), TopLine stocks all popular components that are used in the electronics manufacturing industry.

Dummies have the exact same physical characteristics as "real" components, but they cost up to 80% less. One reason lies with the silicon chips that are considerably less expensive than electrically functioning components.

## Components:

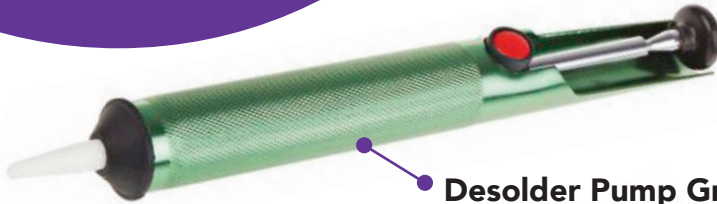
- Chips
- Discretes
- SOIC
- SOJ
- SSOP, TSSOP, MSOP, HSOP
- QPF, TQPF, LQPF
- BGA und Flip Chip
- PLCC
- CERQUAD
- CLCC
- CPGA und CCGA
- LCC
- Flat Pack
- DIP
- Transistors
- Through hole Axial
- Through hole Radial
- There are special training sets for teaching and training purposes available. The PCBs and components contained in those sets enable you to train your staff under real conditions.

# Production Aids

Kaisertech sell a wide range of hand tools including screwdrivers, pliers and cutters from Wiha, Piergiacomini and Lindstrom. Among its range of production tools, Kaisertech also stock servicing aids including brushes, gloves, knives, scalpels, wire strippers and tweezers, among other aids used in the production process.

# Go online!

Visit [www.kaisertech.co.uk](http://www.kaisertech.co.uk) for our full range of products and prices.



**Desolder Pump Green 20 x 180mm**

SKU: 505-451154



**WIHA Screwdriver ESD Slott  
0.8 x 4.0mm 100mm**

SKU: 230-W302-27151



**ESD Anti-static Dispensing  
Solvent Pump 240ml No-splash**

SKU: 360-TSD24AS



**WIHA ESD Plier Gripping  
Flat Nose 120mm**

SKU: 200-W26806



**MBO Solder Wire**

SKU: 500-TSC433



**LINDSTROM Cutter RX Oval  
0.1 - 1.25mm Wire Dia**

SKU: 205-RX8141



**KAPTON Tape 15mm x 33m**

SKU: 700-TK1533



**Tweezer SS-SA Very Fine Pointed  
Tips 135mm**

SKU: 210-PN-SS



**Ambersil Air Duster  
2 400ml**

SKU: 305-12100



**Powder-free Blue Nitrile Gloves**

SKU: 315-SKG



**Antistatic Finger tip  
PU Coated Dissipative  
Gloves | pkt 10**

SKU: 315-DEL310



**RAACO ESD  
Compact 15 Tool Box**

SKU: 150-104432



**Desolder braid  
0.8mm 1.5m no-  
clean Chemtronics**

SKU: 505-60-1-5

**ESD Tape Dispenser**

SKU: 120-TD



**SMD Reel  
Container**

SKU: 135-CR



**Pen Holder ESD**

SKU: 120-PH





# Go online!

Visit [www.kaisertech.co.uk](http://www.kaisertech.co.uk) for our full range of products and prices.



**ESD Anti Static Groundable Booties 100PP**

SKU: 100-GB-S

**QUICK 861DE Hot Air Rework Station 1200W**

SKU: 450-861DE



**Magnifier**

SKU:560-LUXO

**ESD Anti Static Brush Round 6.0mm hard bristle**

SKU: 151-201W



**Scalpel blade No.10a pkt 5**

SKU: 205-SB10A



**ESD Anti Static Disposable Heel Grinder - pkt 100**

SKU: 100-HGD

# Quality from Hampshire, Essex and beyond.

You can trust that we will always stock the best quality products, responsibly sourced. We work hard with all our suppliers to ensure they pay full attention to the well-being of their employees, their communities and the environment in which they're based. This includes using sustainable materials and methods wherever possible, and trading ethically at all times.

We have the very highest standards when it comes to product quality, plus we regularly benchmark Kaisertech Ltd-branded products against the competition to ensure we're not just market-leading in quality, but also on price.

Our teams here at Kaisertech have worked tirelessly, meeting the high standards set both by ourselves and the high expectations of our customers. This is reflected with our ISO 9001:2015 certification.

If you have any queries or wish to place an order by telephone please do not hesitate to contact us.

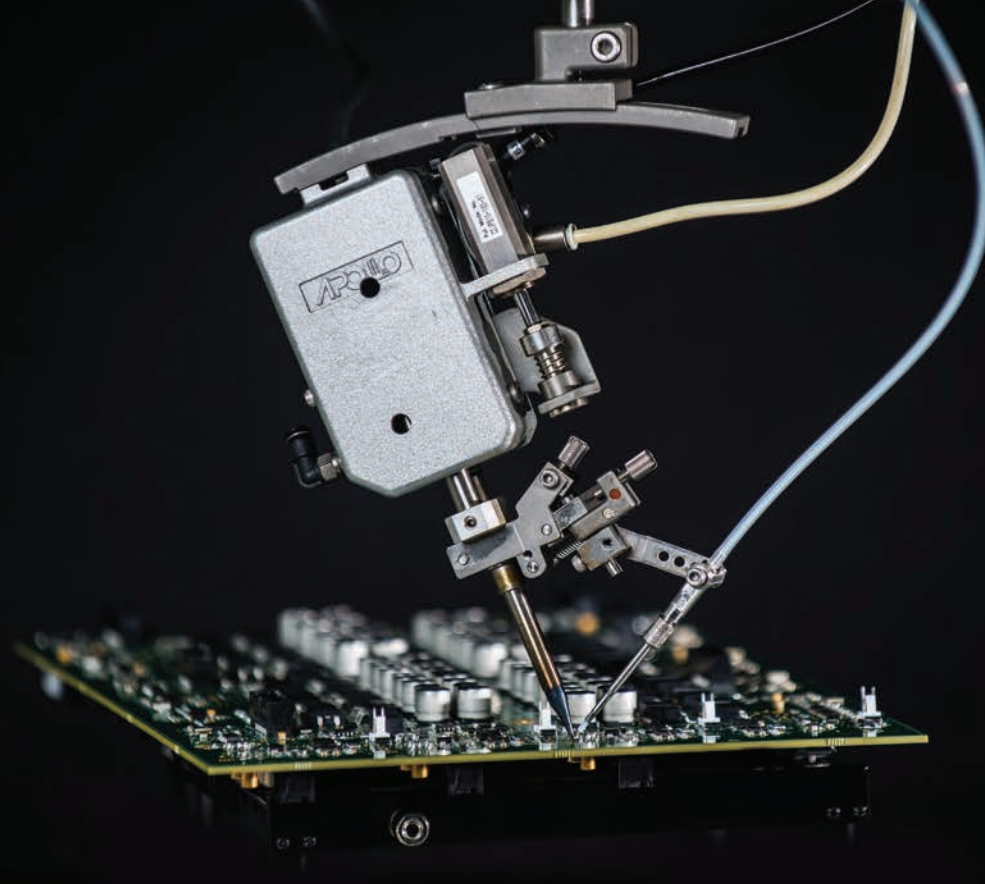
## Essex

Finance House  
20/21 Aviation Way  
Southend-on-Sea  
Essex  
SS2 6UN

## Hampshire

Unit 12, M3 Trade Park  
Manor Way  
Eastleigh  
Hampshire  
SO50 9YA





# kaisertech

Kaisertech Ltd

Tel: +44 (0)23 8065 0065

Fax: +44 (0)23 8065 0060

Email: [sales@kaisertech.co.uk](mailto:sales@kaisertech.co.uk)

[www.kaisertech.co.uk](http://www.kaisertech.co.uk)

Certified Management System – ISO 9001:2015