

# Conductive Fluted Polypropylene

# Conductive Corriplast



Product Data Sheets: Collapsible Tote

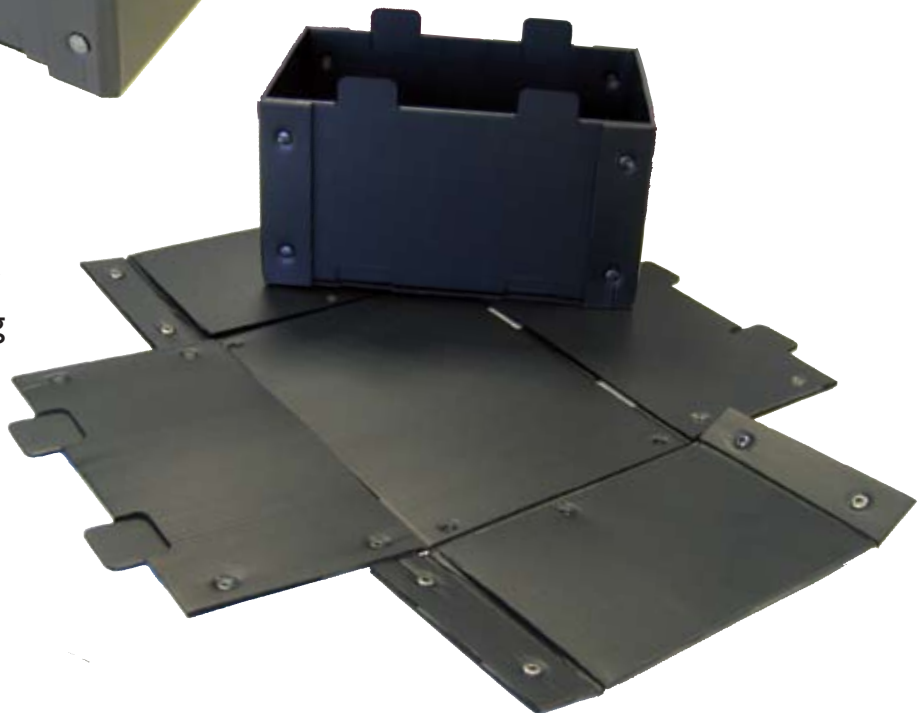


The Collapsible Tote bin offers a perfect solution where space is an issue for storage or returnability.

Manufactured from Conductive Corriplast, the collapsible tote is a robust and ESD safe storage medium.

Supplied in 6 stock sizes to suit corstat division sets or any standard tote bin fitting

With or without lids to satisfy your specific requirements

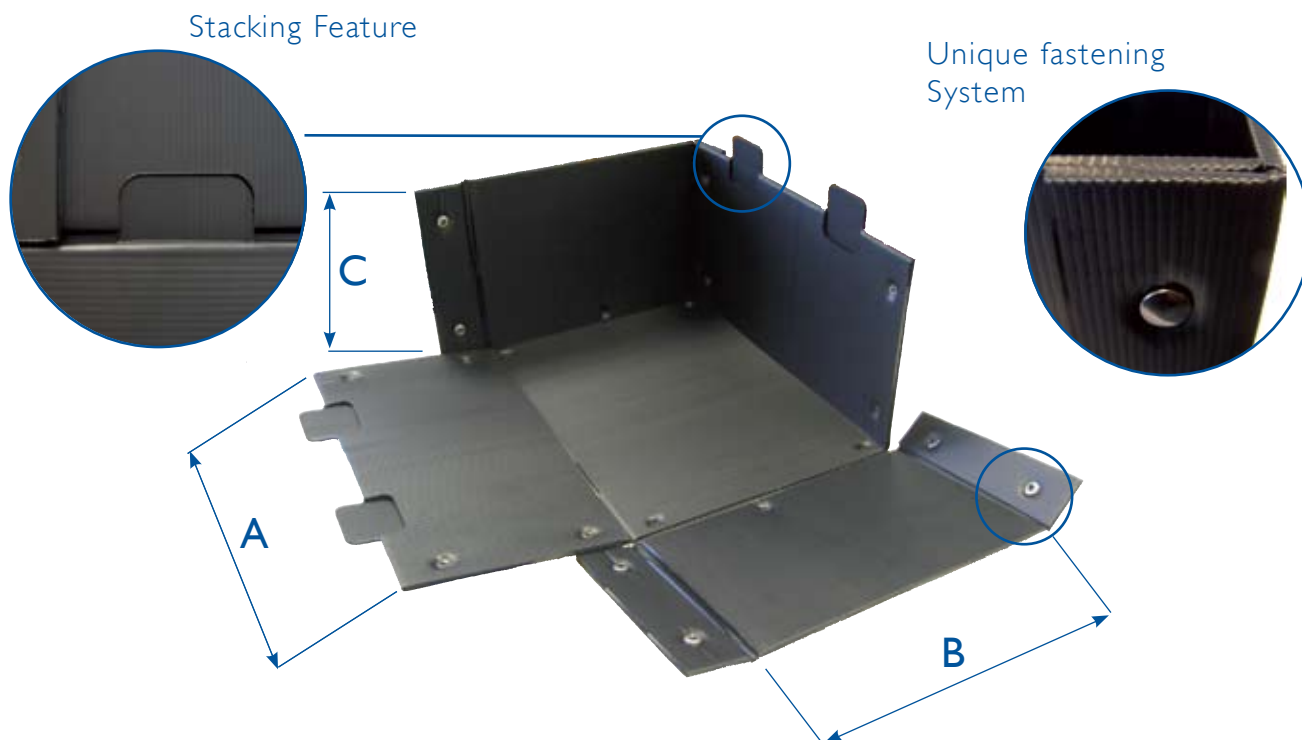


# Conductive Fluted Polypropylene

# Conductive Corriplast



## Product Data Sheets: Collapsible Tote



Part No	Dimension A		Dimension B		Dimension C	
	External	Internal	External	Internal	External	Internal
6000-641	600	578	400	378	110	102
6000-642	600	578	400	378	220	212
6000-643	600	578	400	378	300	283
6000-431	400	378	300	276	110	102
6000-432	400	378	300	276	220	212
6000-433	400	378	300	276	300	283
Lids	Internal Dimensions					
6000-64	600 x 400 x 50					
6000-43	400 x 300 x 50					

If the stock sizes available do not match your specific requirements, we can manufacture any size as a bespoke order.

For further information or a quotation please contact our specialist ESD distributors. Details on line at [www.gwp.co.uk](http://www.gwp.co.uk) under Conductive - Products.