



[www.jbctools.com](http://www.jbctools.com)

## INSTRUCTION MANUAL



# 2 Tool Precision Station

Ref. DDPE-B

# Packing List

The following items should be included:

**DDE Control Unit** ..... 1 unit  
 Ref. DDE-1C (120V)  
 DDE-2C (230V)  
 DDE-9C (100V)



**Stand** ..... 1 unit  
 Ref. AD-SE



**Stand** ..... 1 unit  
 Ref. AM-SA



**General Purpose Handle** ..... 1 unit  
 Ref. T210-A



**Adjustable Micro Tweezer**..... 1 unit  
 Ref. AM120-A



**Cartridges** .....4 units  
 Ref. C210001 (x1)  
 C210008 (x1)  
 C120002 (x2)



**Cartridge holder** ..... 1 unit  
 Ref. 0021083



**ESD Tip Cleaner**..... 1 unit  
 Ref. CL8499



**Sponge** ..... 1 unit  
 Ref. S0354



**Metal Brush** ... 1 unit  
 Ref. CL6217



**Brass Wool** .....1 unit  
 Ref. CL6210



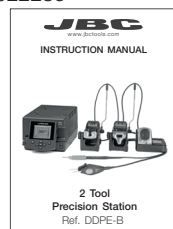
**Stand Cable** ..... 2 units  
 Ref. 0011283



**Power cord** ..... 1 unit  
 Ref. 0010569 (230V)  
 0013671 (100/120V)



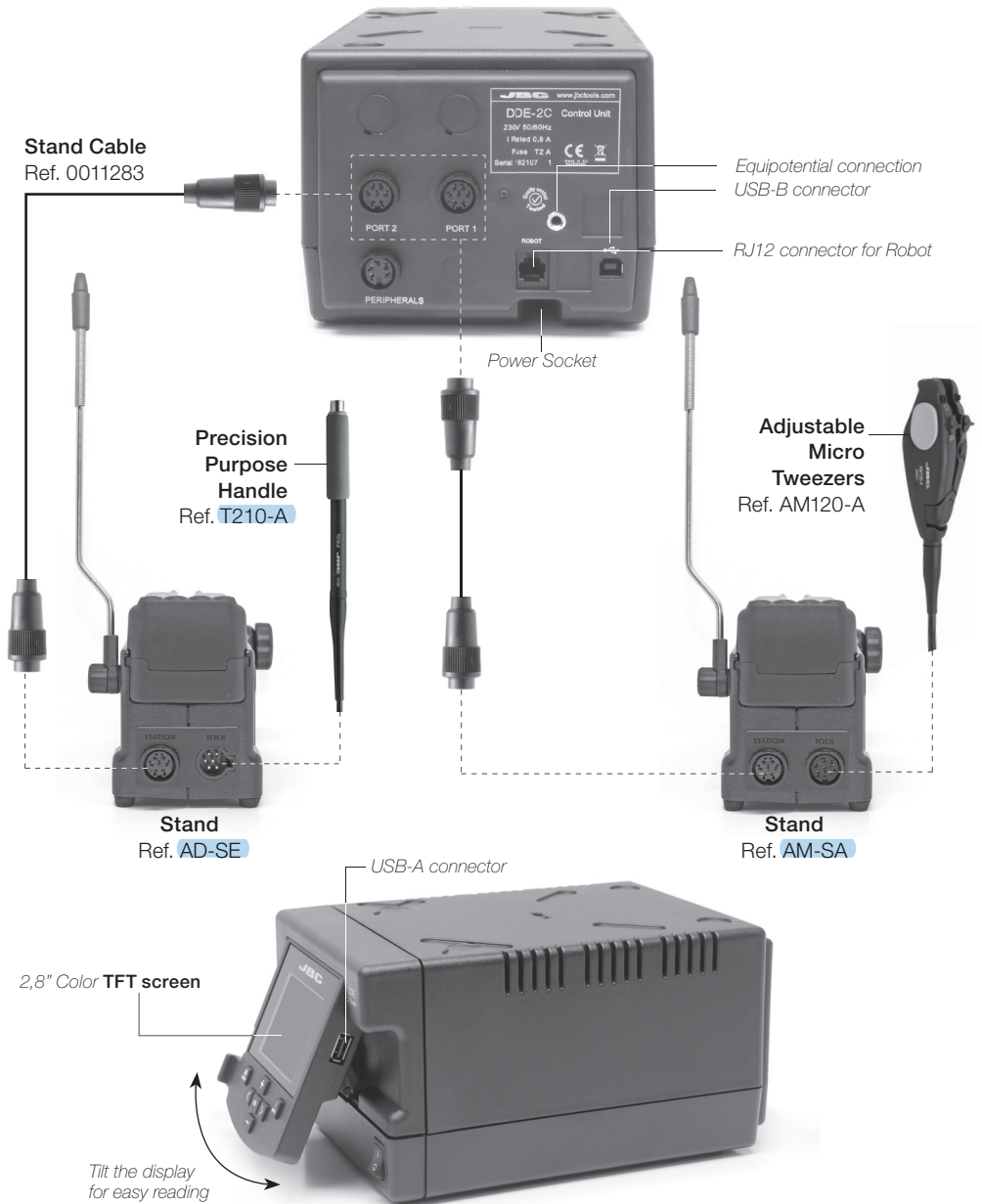
**Manual** .....1 unit  
 Ref. 0022285



Check our website for the corresponding manuals. Also available in other languages.

## Features

Work simultaneously with **up to 2 tools** and join each station port with **1 module** + 1 pedal (Peripherals).



# DDE-C Compatibility

Basic working system				Peripherals**			
Control Unit	Stand	Tool	Cartridge Range	MSE-A / MVE-A	MNE-A	FSE-A	P-005
DDE-C	AD-SE	T210-A	C210			●	●
		T245-A	C245			●	●
		T470-A	C245			●	●
	DN-SE	T210-NA*	C210		●		●
		T245-NA*	C245				
		T470-NA*					
	AP-SE	AP250-A	C250			●	●
	PA-SE	PA120-A	C120			●	●
	HT-SE	HT420-A	C420			●	●
	DS-SE	DS360-A	C360	●			●
DR-SE	DR560-A	C560	●			●	

## Maintenance

Before carrying out maintenance or storage, always allow the equipment to cool.

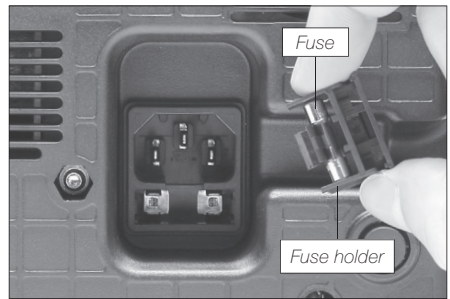
- Clean the station screen with a glass cleaner or a damp cloth.
- Use a damp cloth to clean the casing and the tool. Alcohol can only be used to clean the metal parts.
- Periodically check that the metal parts of the tool and stand are clean so that the station can detect the tool status.
- Maintain tip surface clean and tinned prior to storage in order to avoid tip oxidation. Rusty and dirty surfaces reduce heat transfer to the solder joint.
- Periodically check all cables and tubes.



*Clean periodically*



- Replace a blown fuse as follows:



1. Pull off the fuse holder and remove the fuse. If necessary use a tool to lever it off.
2. Press the new fuse into the fuse holder and replace it in the station.

- Replace any defective or damaged pieces. Use original JBC spare parts only.
- Repairs should only be performed by a JBC authorized technical service.

# Safety



**It is imperative to follow safety guidelines to prevent electric shock, injury, fire or explosion.**

- Do not use the units for any purpose other than soldering or rework. Incorrect use may cause fire.
- The power cord must be plugged into approved bases. Be sure that it is properly grounded before use. When unplugging it, hold the plug, not the wire.
- Do not work on electrically live parts.
- The tool should be placed in the stand when not in use in order to activate the sleep mode. The soldering tip, the metal part of the tool and the stand may still be hot even when the station is turned off. Handle with care, including when adjusting the stand position.
- Do not leave the appliance unattended when it is on.
- Do not cover the ventilation grills. Heat can cause inflammable products to ignite.
- Avoid flux coming into contact with skin or eyes to prevent irritation.
- Be careful with the fumes produced when soldering.
- Keep your workplace clean and tidy. Wear appropriate protective glasses and gloves when working to avoid personal harm.
- Utmost care must be taken with liquid tin waste which can cause burns.
- This appliance can be used by children over the age of eight and also persons with reduced physical, sensory or mental capabilities or lack of experience provided that they have been given adequate supervision or instruction concerning use of the appliance and understand the hazards involved. Children must not play with the appliance.
- Maintenance must not be carried out by children unless supervised.

有害物质含量表

产品中有害物质的名称及含量

部件名称	有害物质					
	铅(Pb)	汞(Hg)	镉(Cd)	六价铬 (Cr(VI))	多溴联苯 (PBB)	多溴二苯醚 (PBDE)
烙铁头	O	O	O	O	O	O
手柄	O	O	O	O	O	O
电源线	O	O	O	O	O	O
主机	O	O	O	O	O	O
电源插座	O	O	O	O	O	O
保险丝	O	O	O	O	O	O
主开关	O	O	O	O	O	O
电位连接	X	O	O	O	O	O
变压器	O	O	O	O	O	O
线路板	X	O	O	O	O	O
O 表示该有害物质在该部件所有均质材料中的含量均在GB/T 26572 规定的限量要求以下。 X 表示该有害物质至少在该部件的某一均质材料中的含量超出GB/T 26572 规定的限量要求。						

## Exploded View

**DDPE-1B** 120V

**DDPE-2B** 230V

**DDPE-9B** 100V

PRECISION STATION

DDE-1C / DDE-2C / DDE-9C



T210-A

C210001

C210008

AD-SE

AM120-A

C120002



## SPARE PARTS

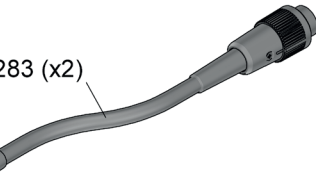
### DDE-1C / DDE-2C / DDE-9C:

-REAR CIRCUIT	0018129
-ENCLOSURE	
· TOP	0019028
· BOTTOM	0014567
· FRONT+DISPLAY	0019246
· BACK	0013413

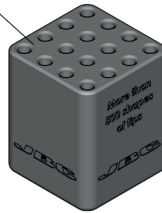
DDPE-1B 120V FUSE T-4A

DDPE-2B 230V FUSE T-2A

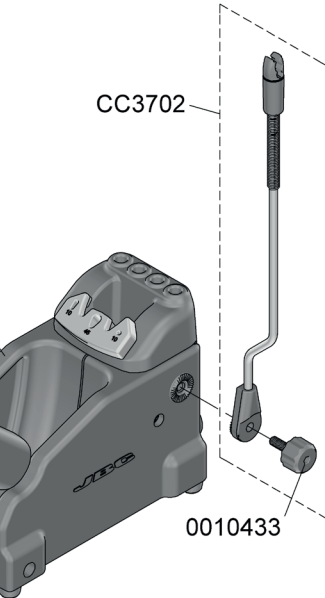
DDPE-9B 100V FUSE T-5A



SCH-A

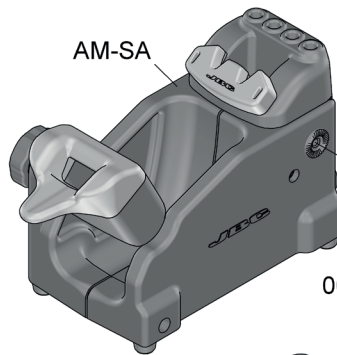


CC3702



0010433

CC3702



0010433

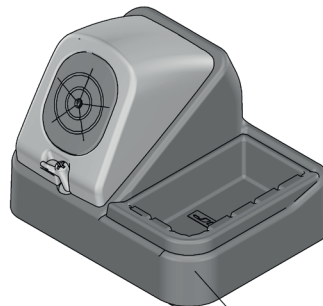
AM-SA



CL6210



S0354



CL8499

# Specifications

## 2 Tool Precision Station

### DDPE-1B / DDPE-2B / DDPE-9B

- Total weight: 8,8 kg (17.64 lb)
- DDE-1C** 120V 50/60Hz. Input fuse: 4A. Output: 23.5V
- DDE-2C** 230V 50/60Hz. Input fuse: 2A. Output: 23.5V
- DDE-9C** 100V 50/60Hz. Input fuse: 5A. Output: 23.5V
- Net Weight: 3,815 kg (8.41 lb)
- Dimensions: 148 x 120 x 232 mm (5.83 x 4.72 x 9.13 in)
- Output Peak Power: 150W per tool
- Temperature Range: 90 - 450 °C (190 - 840 °F)
- Idle Temp. Stability (still air): ±1.5 °C (±3 °F)
- Tip to ground resistance: <2 ohms
- Tip to ground voltage: <2mV RMS
- Ambient Operating Temperature: 10 - 40 °C (50 - 104 °F)
- Communicatio connectors: USB-A / USB-B / Peripherals connectors
- Robot connector: RJ12 for RS-232 protocol

Complies with CE standards.  
ESD protected.

## Notes

This image shows a single sheet of white paper with horizontal ruling lines. The lines are evenly spaced and run across the width of the page. There are no margins, text, or other markings on the paper.



### Warranty

JBC's 2 year warranty covers this equipment against all manufacturing defects, including the replacement of defective parts and labour. Warranty does not cover product wear or misuse. In order for the warranty to be valid, equipment must be returned, postage paid, to the dealer where it was purchased.

**Please register your product warranty within 30 days of purchase in:**  
**[www.jbctools.com/productregistration](http://www.jbctools.com/productregistration).**



This product should not be thrown in the garbage.

In accordance with the European directive 2002/96/EC, electronic equipment at the end of their life must be collected and returned to an authorized recycling facility.



Manual in other languages available on our website

**[www.jbctools.com](http://www.jbctools.com)**