



[www.jbctools.com](http://www.jbctools.com)

English



# HD Thermal Tweezers

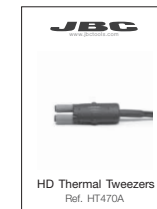
Ref. HT470-A

## Packing List

The following items should be included:

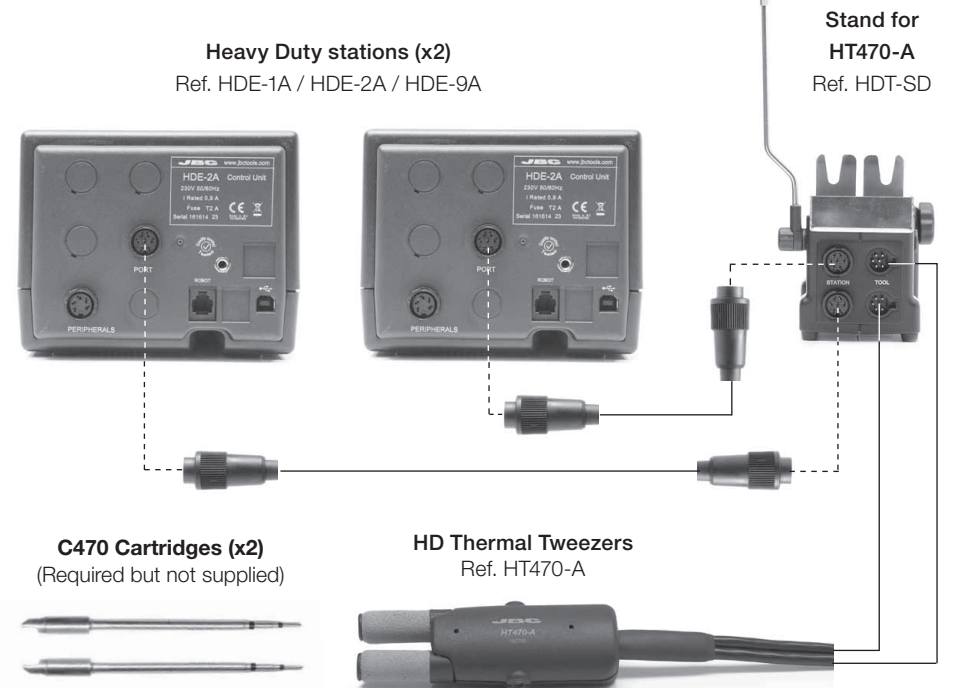
**HD Thermal Tweezers** .....1 unit  
Ref. HT470-A

**Manual**.....1 unit  
Ref. 0014774



## Features

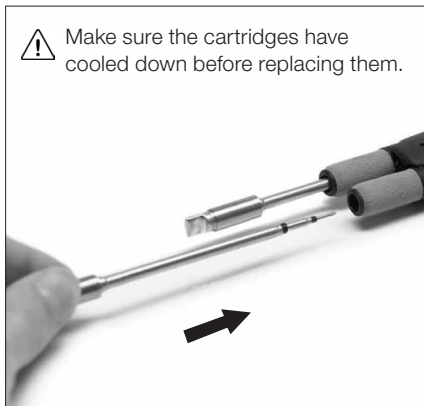
This kit requires two Heavy Duty stations (HDE) to manage the cartridges individually thereby optimizing their thermal performance.



## Placing Cartridges

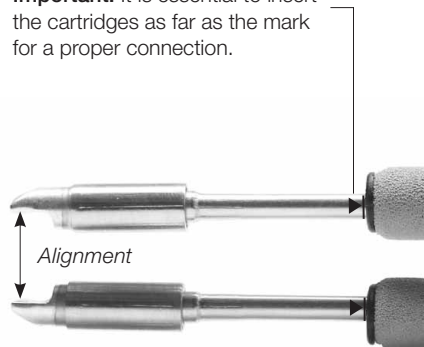
1. Insert both cartridges when the station is off.

⚠ Make sure the cartridges have cooled down before replacing them.



2. Align them.

**Important:** It is essential to insert the cartridges as far as the mark for a proper connection.



3. Tighten both screws.

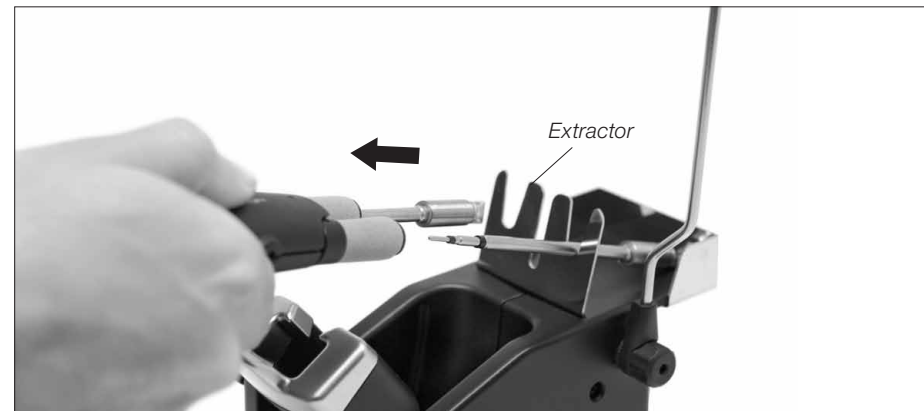


### Compatible cartridges

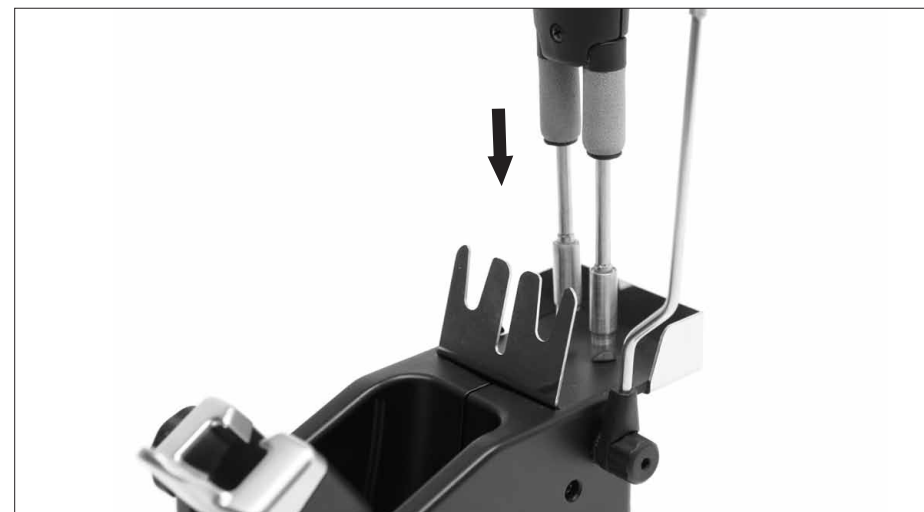
The HT470-A work with the C470 cartridge range. See the full range in [www.jbctools.com](http://www.jbctools.com) and find the model that best suits your soldering needs. For special models, please contact us.

## Changing Cartridges

1. Turn the station off and loosen the screws.
2. Remove the cartridges using the extractor.



3. Follow the "Placing cartridges" guidelines and use the extractor to help insert the cartridges.



## Maintenance

Before carrying out maintenance or storage, always unplug the stand and the tool.

- Periodically check all cables and tubes. The metal parts should be clean so that the station can detect the tool status. Use a damp cloth or alcohol.
- Replace any defective or damaged parts. Use original JBC spare parts only.
- Repairs should be performed only by a JBC authorized technical service.

## Safety



**It is imperative to follow safety guidelines to protect health and prevent electric shock, injury, fire or explosions.**

- Do not use the tool for any purpose other than soldering or rework. Incorrect use may cause fire.
- It is necessary to turn the station off before changing cartridges. The screw ensures the correct operation of the tool.
- Do not work on electrically live parts.
- The power cord must be plugged into approved bases. Be sure that it is properly grounded before use. When unplugging it, hold the plug, not the wire.
- The tool should be placed in the stand when not in use in order to activate the sleep mode. The soldering tip, the metal part of the tool and the stand may still be hot even when the station is turned off. Handle with care, including when adjusting the stand position.
- Do not leave the appliance unattended when it is on. Do not cover the ventilation grills of the control unit. Heat can cause inflammable products to ignite.
- Use a "non residue" classified flux and avoid contact with skin or eyes to prevent irritation.
- Be careful with the fumes produced when soldering. Utmost care must be taken with liquid tin waste which can cause burns.
- Keep your workplace clean and tidy. Wear appropriate protective glasses and gloves when working to avoid personal harm.
- This appliance can be used by children over the age of eight and also persons with reduced physical, sensory or mental capabilities or lack of experience provided that they have been given adequate supervision or instruction concerning use of the appliance and understand the hazards involved. Children must not play with the appliance. Maintenance must not be carried out by children unless supervised.

## Specifications

- Total weight: 350g (12 oz)

Complies with CE standards  
ESD protected housing "skin effect"



---

### Warranty

JBC's 2 year warranty covers this equipment against all manufacturing defects, including the replacement of defective parts and labour. Warranty does not cover product wear due to use or mis-use.

In order for the warranty to be valid, equipment must be returned, postage paid, to the dealer where it was purchased.

---



This product should not be thrown in the garbage.  
In accordance with the European directive 2002/96/EC, electronic equipment at the end of their life must be collected and returned to an authorized recycling facility.