

# JBC

[www.jbctools.com](http://www.jbctools.com)



## Hot Air Station

Ref. JTSE-A

# Packing List

The following items should be included:

**JTE Control Unit** .....1 unit

Ref. JTE-1A  
JTE-2A  
JTE-9A



**Stand** .....1 unit

Ref. JT-SD



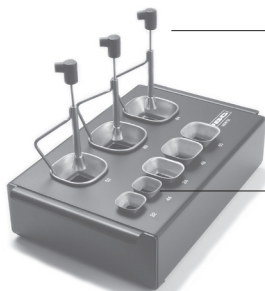
**Heater hose set** .....1 unit

Ref. JT-T1A (100V / 120V)  
JT-T2A (230V)



**Extractor desk** .....1 unit

Ref. 0008752\*



**JT Accessory set**

Ref. 0012332

**Extractors\***

Ref. E2184  
E2064  
E2052

**Tripod\***

Ref. T2050  
T2250



**Protectors\***

Ref. P2220  
P2230  
P2235  
P4000  
P4010

**Suction Tube\***

Ref. 0932330



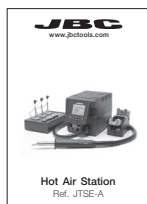
**Power cable** .....1 unit

Ref. 0009417  
(100V/120V)  
0009401  
(230V)



**Manual** .....1 unit

Ref. 0017172



**Suction Cups\***

Ref. 0930110  
Ø 10 - 0934050 (x3)  
Ø 4.7 - 0934070



**Nozzles**

Ref. JN2015  
JN2012  
JN2020



\* Not supplied with JT-Q stations

## Features

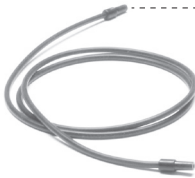


USB-B connector  
Update the station software  
from the JBC website

Thermocouple type K  
Activates de suction pump

Heating element

Hot Air button  
(On / Off)



**Suction Tube**  
Ref. 0932330

For tripods and extractors

**Heater Hose set**  
Ref. JT-T1A (100V/120V)  
JT-T2A (230V)



**Stand**  
Ref. JT-SD



Auxiliar connector

Equipotential connection

USB connector

Robot RS232 connector

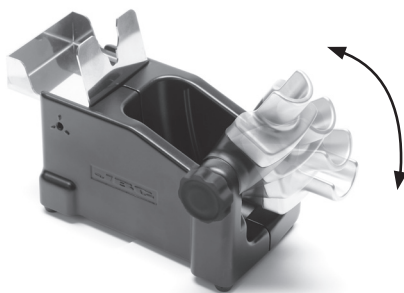
Power Socket

Fuse

P-005 Pedal connection

## Adjustable Stand

Adjust the tool holder angle to suit your work position.



## Operation Modes

1. From the Tool Settings Menu, select the mode to activate the tool depending on the task.

### Tool button



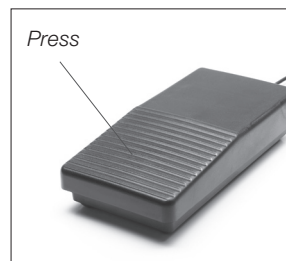
Press the start/stop button to blow hot air.

### Autostart



The tool automatically starts blowing hot air when lifted from the stand.

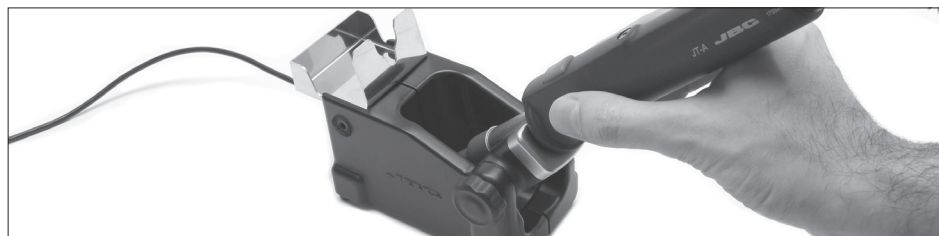
### Pedal\*



Press the Pedal to blow hot air and release to stop.

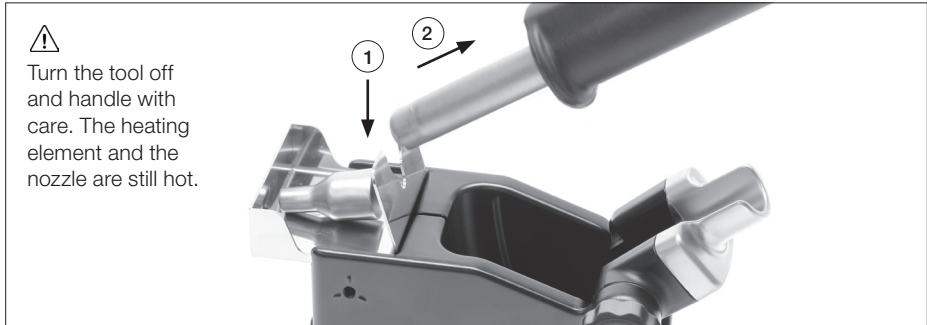
\*The **P-005** Pedal is not supplied with this station. See our website.

2. The tool stops blowing hot air when returned to the stand.



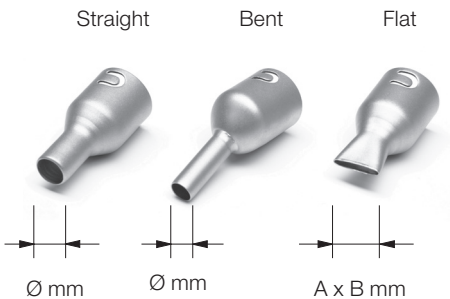
## Quick Nozzle Changer

Changing nozzles quickly and safely.



## Compatible Nozzles

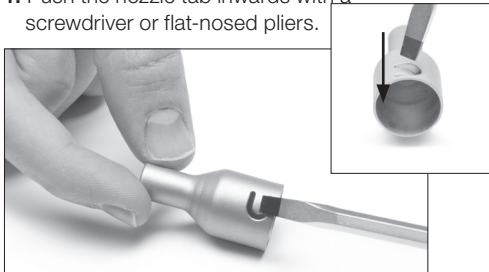
The JT-TA works with JT nozzles. Find the model that best suits your soldering needs in [www.jbctools.com](http://www.jbctools.com)



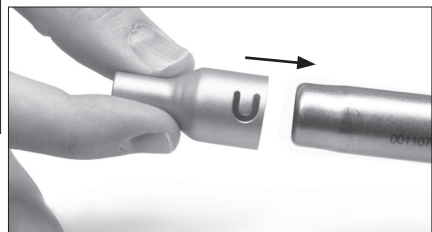
Ref.	Shape	Size
JN2020	Straight	Ø 8mm
JN8417	Straight	Ø 10mm
JN2015	Bent	Ø 4mm
JN2012	Bent	Ø 6mm
JN6633	Bent	Ø 8mm
JN7637	Flat	10 x 2mm
JN7638	Flat	20 x 2mm
JN7639	Flat	30 x 2mm

In case of a loosely fitting nozzle:

1. Push the nozzle tab inwards with a screwdriver or flat-nosed pliers.

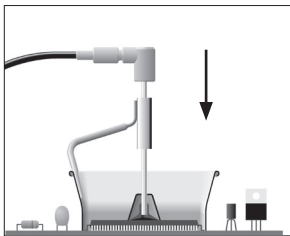


2. Insert the nozzle into the JT-TA Heater again.



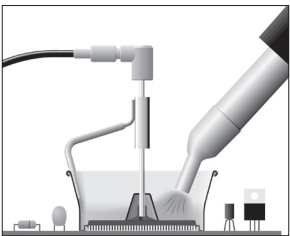
# Operation

## 1. Placing



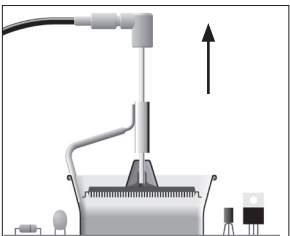
Position the extractor with the appropriate suction cup and press the suction button.

## 2. Heating



Heat the component.

## 3. Releasing

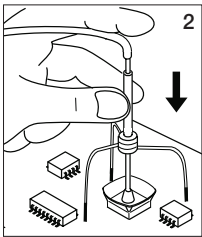
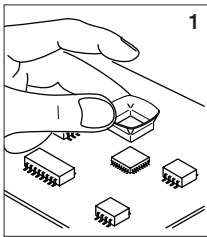


The component lifts off automatically when the solder melts.

# Protectors & Extractors

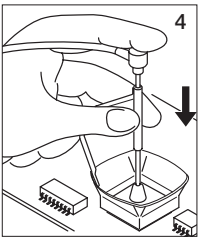
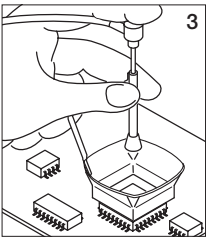
## For small components (fig. 1 and 2).

We recommend using the protector + tripod

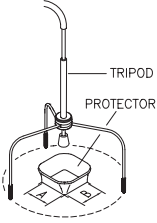
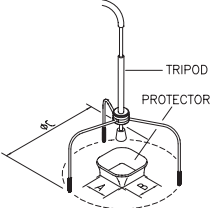


## For large components (fig. 3 and 4).

We recommend using the manual extractors

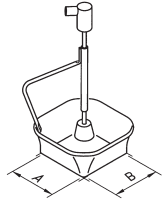
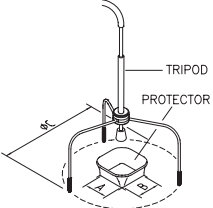


### Protectors

* Ref.	AxB (mm)	* Ref.	AxB (mm)
P3353	4,3 x 3	48 P2230	15 x 15
P3786	5,2 x 5,2	60 P4010	17 x 17
P3352	5,2 x 7,5		P4005 18 x 29
P3355	5,2 x 9,5		P4030 18,5 x 18,5
P3356	6,2 x 4,2		P1068 18,5 x 24
P3785	7,2 x 7,2		P2685 28,5 x 28,5
P3784	8,2 x 8,2		P4085 31,5 x 31,5
P4035	9 x 13		P2672 33 x 46
P4040	9,5 x 19		P4002 50 x 50
P4080	9,5 x 21		P3357 52,5 x 14
32 P2220	10 x 10		
P4045	10,5 x 21		
P4090	11 x 16		
24 P2235	12 x 17		
P1249	12 x 23		
44 P4000	12,5 x 12,5		
P3354	13,2 x 13,2		
P4025	13,5 x 21,5		

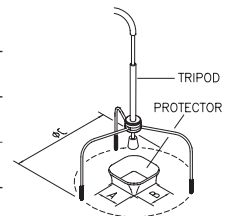
\* Reference Desk

### Extractors

* Ref.	AxB (mm)	* Ref.	AxB (mm)
52 E2052	20 X 20	E2124	45 X 45
64 E2064	20 X 26		
80 E2184	24 X 24		
	E2068 27 X 27		
	E4020 28,5 X 28,5		
	E4015 31,5 X 31,5		
	E2084 33 X 33		
	E2100 38 X 38		

### Tripods

* Ref.	øC (mm)
T2050	39
T2250	85



### Manual extractor

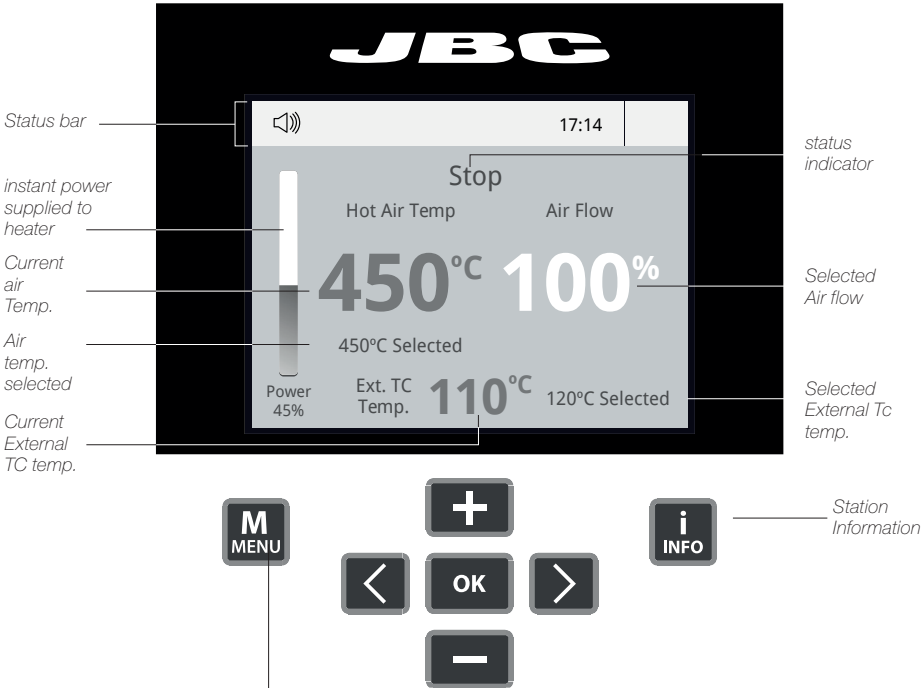
* Ref.	øD (mm)
E2190	7



# Process Control

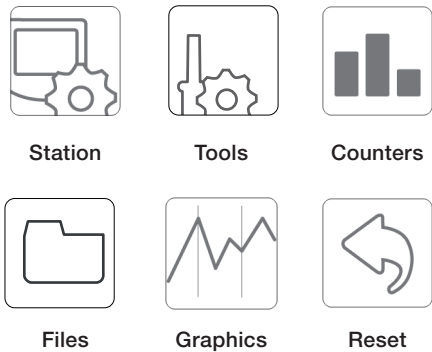
The JTSE offers an **intuitive user interface** which provides **quick access** to station parameters.

## Manual Mode



### Menu Options

Press INFO for each parameter description.



### System notifications (Status Bar)

- USB flash drive is connected.
- Station is controlled by a PC.
- Station is controlled by a robot.
- Station software update. Press INFO to start the process.
- Warning. Press INFO for failure description.
- Error. Press INFO for failure description, the type of error and how to proceed.

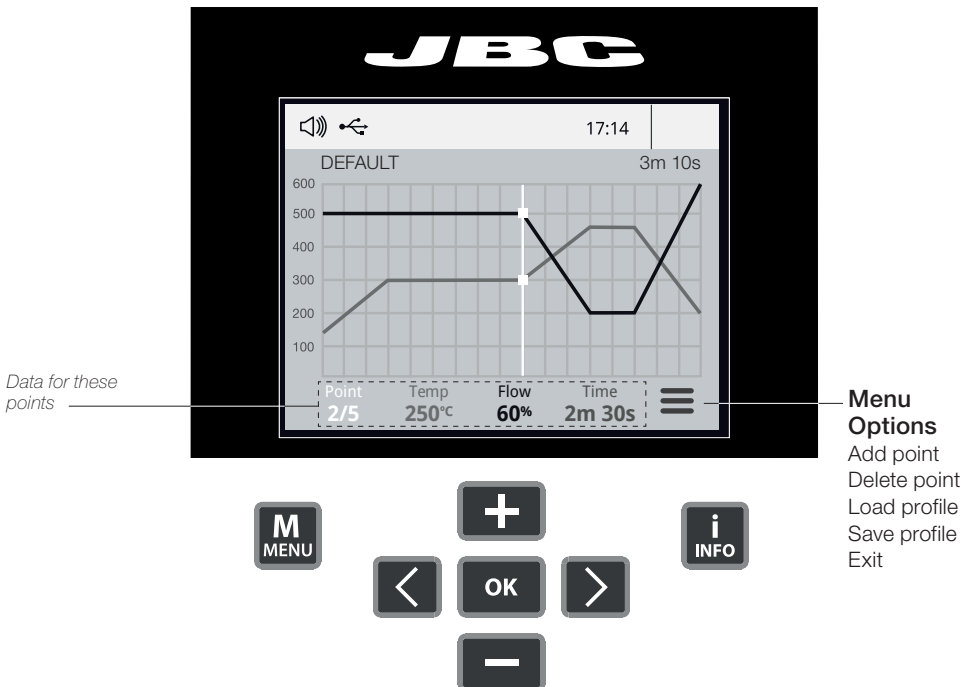


## Process Control

### Profiles Mode / Work



### Profiles Mode / Edit

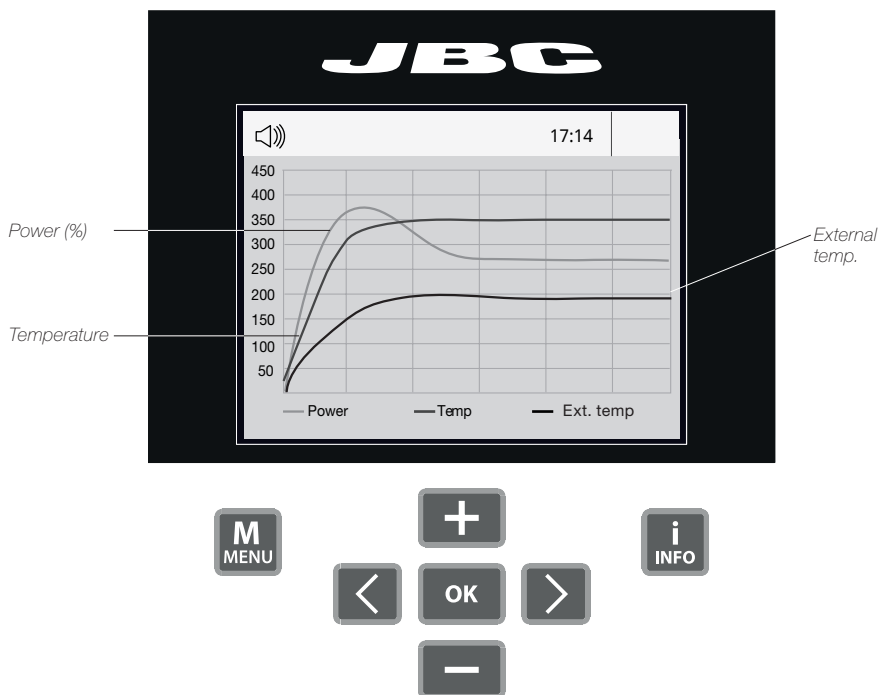


## Process analysis



Graphics

By pressing **Graphics** in the main MENU, temperature and power figures in real time are displayed. This helps you decide which tip to use to obtain the best quality solder joints.



### Export graphics

Insert a USB flash drive into the USB-A connector to save your soldering process in csv format.


### Export / Import profiles

Insert a USB flash drive into the USB-A connector to export / import temperature profiles.



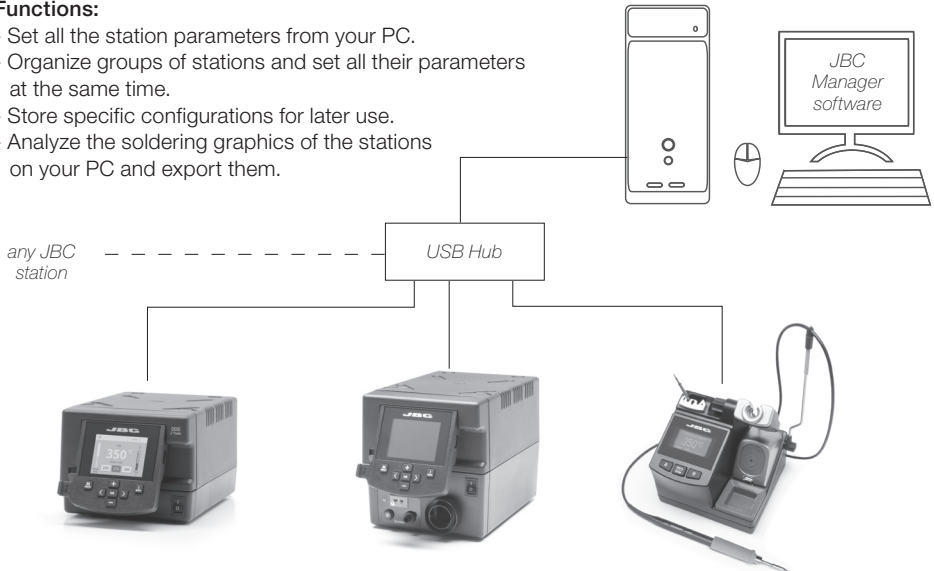
## Soldering Net (Soon available)

Remotely manage and monitor your stations.

1. Download the **JBC Manager software** and the user manual from [www.jbctools.com/manager.html](http://www.jbctools.com/manager.html)
2. Connect the stations via USB-B connector and the PC will automatically detect them.
3. The notification  will be displayed on the station.

### Functions:

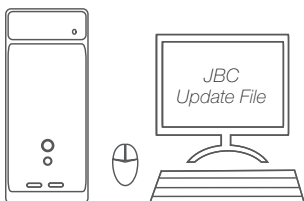
- Set all the station parameters from your PC.
- Organize groups of stations and set all their parameters at the same time.
- Store specific configurations for later use.
- Analyze the soldering graphics of the stations on your PC and export them.



## Update the station software

1. Download the JBC Update File from [www.jbctools.com/software.html](http://www.jbctools.com/software.html) and save it on a USB flash drive. (Preferably one with no other files).

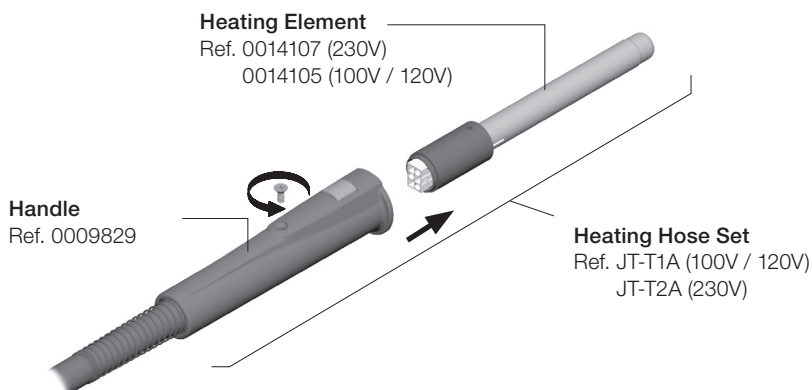
2. Insert the USB flash drive to the station. The icon  is displayed while updating.



## Replacing the Heating Element

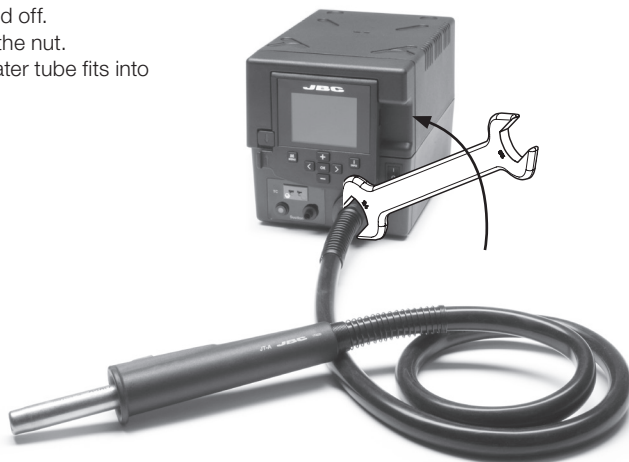
Only perform this operation when the element is cold and the unit is disconnected from the mains.

1. Loosen the screw.
2. Pull the heating element out of the handle.
3. Connect the new heating element, ensuring it is pushed all the way in.
4. Tighten the screw.



## Changing the JT-TA Heater Hose Set

1. Ensure that the tool is turned off.
2. Use a spanner to unscrew the nut.
3. Make sure that the new heater tube fits into the grooves in the socket.
4. Tighten the screw.



## Pick & Place *(not supplied with JT)*

This tool helps you place and remove SMDs of any size easily thanks to the suction pump.

**Pick & Place**  
Ref. T260-A



**Bent Needles Set**  
Ref. 0861660



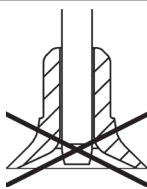
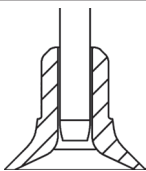
**Straight Needles Set**  
Ref. 0901546



## Operation

Choose the needle and the suction cup that best fits the component and start as follows:

*Press the button to  
start/stop the suction*

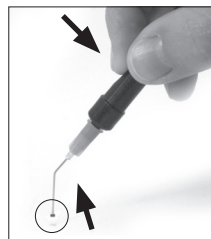


*Maximum working temp: 250°C (482°F)*

Insert the needle with the appropriate cup for a correct suction process.

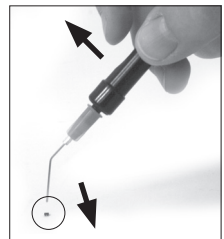
Make sure the needle does not protrude from the cup.

### 1. Suction



Once the suction is activated, cover the pen hole with your finger and lift off the component.

### 2. Release



Lift your finger to release the component.

# Maintenance

Before carrying out maintenance, always allow the equipment to cool.

- Clean the station screen with a glass cleaner or a damp cloth.
- Use a damp cloth to clean the casing and the tool. Alcohol can only be used to clean the metal parts.
- Periodically check that the metal parts of the tool and stand are clean so that the station can detect the tool status.
- Periodically check all cables and tubes.

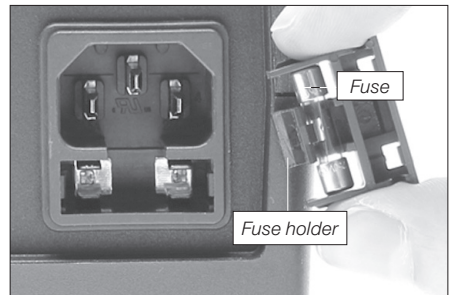
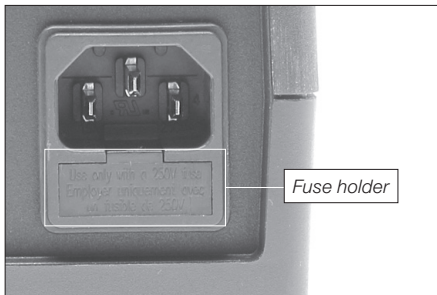
*Clean periodically*



- Replace a blown fuse as follows:

1. Pull off the fuse holder and remove the fuse. If necessary use a tool to lever it off.

2. Insert the new fuse into the fuse holder and return it to the station.



- Replace any defective or damaged pieces. Use original JBC spare parts only.
- Repairs should only be performed by a JBC authorized technical service.

## Safety



**It is imperative to follow safety guidelines to prevent electric shock, injury, fire or explosion.**

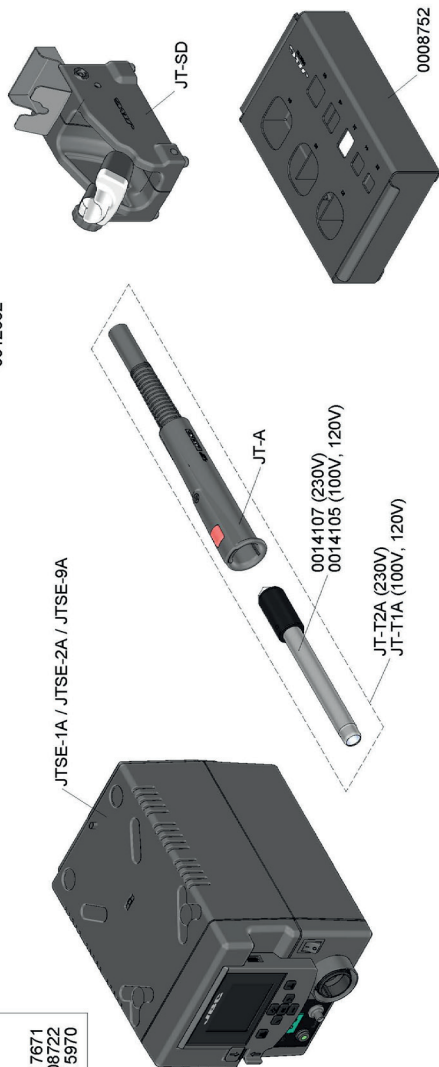
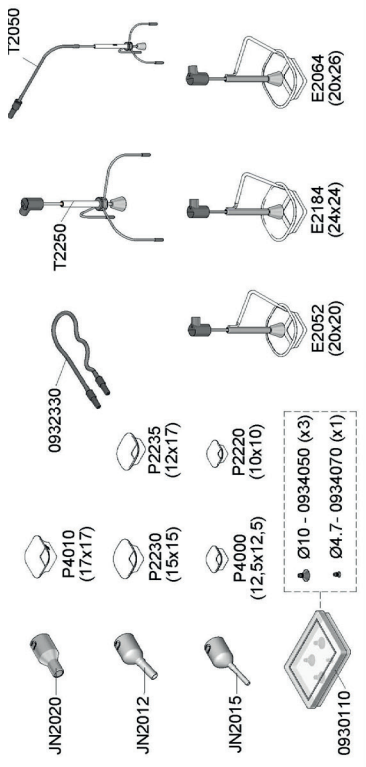
- Do not use the units for any purpose other than soldering or rework. Incorrect use may cause fire.
- The power cord must be plugged into approved bases. Make sure that it is properly grounded before use. When unplugging it, hold the plug, not the wire.
- Do not work on electrically live parts.
- The tool should be placed in the stand when not in use to turn off the hot air.  
The soldering tip, the metal part of the tool and the stand may still be hot even when the station is turned off. Handle with care, including when adjusting the stand position.
- Do not leave the appliance unattended when it is on.
- Do not cover the ventilation grills. Heat can cause inflammable products to ignite.
- Avoid the contact of flux with skin or eyes to prevent irritation
- Be careful with the fumes produced when soldering.
- Keep your workplace clean and tidy. Wear appropriate protection glasses and gloves when working to avoid personal harm.
- Utmost care must be taken with liquid tin waste which can cause burns.
- This appliance can be used by children over the age of eight and also persons with reduced physical, sensory or mental capabilities or lack of experience provided that they have been given adequate supervision or instruction concerning use of the appliance and understand the hazards involved. Children must not play with the appliance.
- Maintenance must not be carried out by children unless supervised.





**JTSE-1A** 120V  
**JTSE-2A** 230V  
**JTSE-9A** 100V  
**HOT AIR STATION**

SPARE PARTS	
JTSE-1A / JTSE-2A / JTSE-9A	
ENCLOSURES:	
-TOP	0011035
-BOTTOM	0013486
-FRONT	0016862
-BACK	0016812
JTSE-1A / JTSE-9A	
-CIRCUIT	0017185
-SUCTION PUMP	0008723
-HOT AIR PUMP	0015970
JTSE-2A	
-CIRCUIT	0017671
-SUCTION PUMP	0008722
-HOT AIR PUMP	0015970



## Notes

[illegible]

This image shows a single sheet of white paper with horizontal ruling lines. The lines are evenly spaced and run across the width of the page. There are no margins, text, or other markings on the paper.

## Specifications

**JTSE-1A** 120V 50/60Hz. Input fuse: 6A. Rated current:6A

**JTSE-2A** 230V 50/60Hz. Input fuse: 8A. Rated current:3A

**JTSE-9A** 100V 50/60Hz. Input fuse: 4A. Rated current:7A

- Weight: 1.9 Kg (4.2 lb)
- Dimensions: 225 x 145 x 155 mm
- Nominal power: 700W
- Temperature selection: Room temp. / 150 - 450 °C (300 - 840 °F)
- Cool mode: T off. Used to blow air to room temperature
- Ambient operating temp: 10 - 40 °C / 50 - 104 °F
- Air flow regulation: 5 - 50 SLPM
- Vacuum: 30% / 228 mmHg / 9 inHg
- Connectors: USB station-PC
- P-005 Pedal

Complies with CE standards

ESD protected housing "skin effect"

# JBC

### Warranty

JBC's 2 year warranty covers this equipment against all manufacturing defects, including the replacement of defective parts and labour.

Warranty does not cover product wear or misuse.

In order for the warranty to be valid, equipment must be returned, postage paid, to the dealer where it was purchased.



This product should not be thrown in the garbage.

In accordance with the European directive 2002/96/EC, electronic equipment at the end of their life must be collected and returned to an authorized recycling facility.

Manual in other languages available on our website

**[www.jbctools.com](http://www.jbctools.com)**