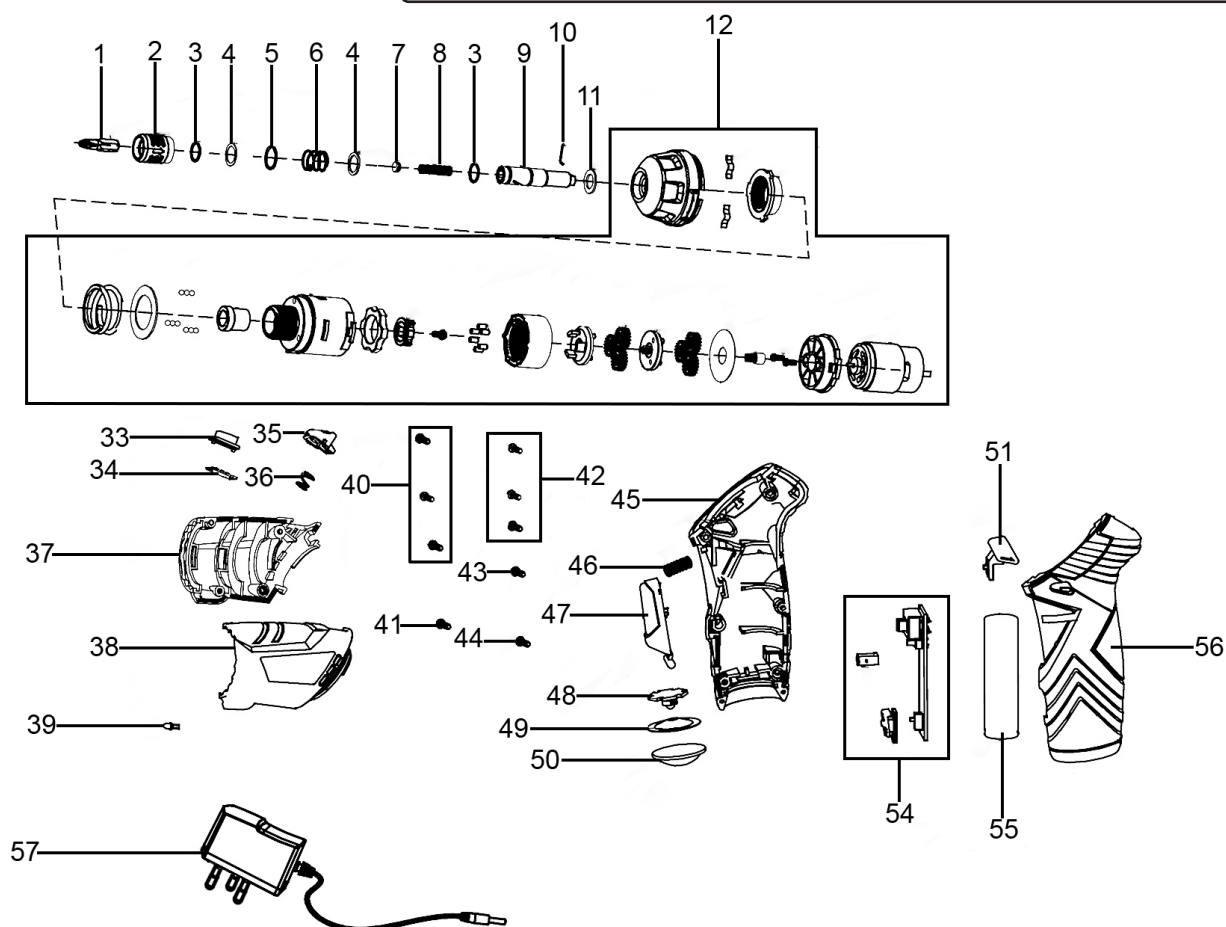


Parts Information: Cordless Screwdriver Set 53pc 3.6V Lithium-ion Model No: CP36S.V4



Item	Part No.	Description
1	CP36B.01	Bit
2	CP36B.02	Bushing
3	CP36B.03	C-Ring
4	CP36B.04	Washer
5	CP36B.05	C-Ring
6	CP36B.06	Spring
7	CP36B.07	Rubber Bushing
8	CP36B.08	Spring, Output Shaft
9	CP36B.09	Output Shaft
10	CP36B.10	Wire Clasp
11	CP36B.11	Washer, Output Shaft
12	CP36B.12-32	Gearbox & Motor Assembly
33	CP36B.33	Cover, Battery Indicator
34	CP36B.34	PCB, Battery Indicator
35	CP36B.35	Rotation Button
36	CP36B.36	Spring, Rotation Button
37	CP36B.37	Housing Support
38	CP36B.38	Housing Cover

Item	Part No.	Description
39	CP36S.V3-39	Led
40	CP36S.V3-40	Self-Tapping Screw ST2.5 x 12mm
41	CP36S.V3-41	Self-Tapping Screw ST2.5 x 8mm
42	CP36B.40	Self-Tapping Screw ST2.5 x 12mm
43	CP36MS.45	Self-Tapping Screw ST2.5 x 12mm
44	CP36S.V3-44	Self-Tapping Screw ST3 x 16mm
45	CP36S.V3-45	Side Handle, Right
46	CP36B.43	Spring, Switch
47	CP36S.V3-47	Button, Switch
48	CP36S.V3-48	LED Panel
49	CP36S.V3-49	Reflective Cap
50	CP36S.V3-50	Protective Cover
51	CP36S.V3-51	Switch, Forward/Reverse
54	CP36S.V3-54	PCB Assembly
55	CP36B.47	Battery
56	CP36S.V3-56	Side Handle, Left
57	CP36S.V4-57	Mains Charger

NOTE: It is our policy to continually improve products and as such we reserve the right to alter data, specifications and component parts without prior notice. There may be alternative versions of this product, please contact us should you require this information.

IMPORTANT: No liability is accepted for incorrect use of product. Spare parts must be fitted by a competent person

WARRANTY: Guarantee is 12 months from purchase date, proof of which will be required for any claim.