

# EVOTIS

## Technical Inspection System

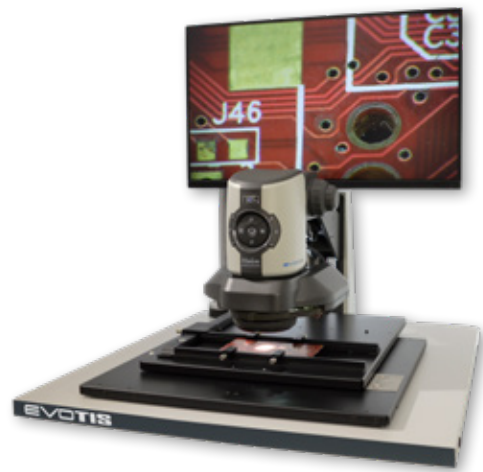
For electronics and industrial applications

**Vision**  
ENGINEERING  
[visioneng.com/evotis](http://visioneng.com/evotis)

EVOTIS is an advanced inspection workstation for large area subjects such as PCB's and palletized components. Independently lockable X-Y axis movement allows methodical inspection scanning along rows of features.

Compatible with Lynx EVO and EVO Cam II, EVOTIS provides access to a large range of inspection tools, including 360° rotating viewer, wide range of objectives, high resolution camera modules and reticles, and giving a potential magnification range from 3.7x to 300x.

- Fast inspection of large and complex components
- Independently lockable X-Y stage for methodical inspection along features
- 25° tilt wedge for fixed position oblique viewing
- Compatible with unique 360° rotating viewer
- Specially coated ESD base board and earthing point

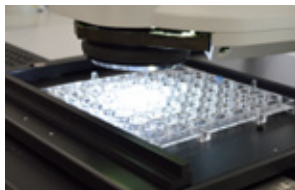


### EVOTIS with Lynx EVO

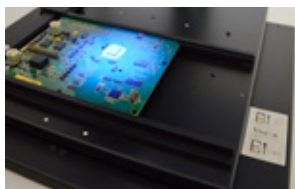
- ✓ Ergonomic eyepiece-less stereo 3D view
- ✓ 3.7x to 180x magnification
- ✓ Compatible with Lynx EVO objective lenses & accessories

### EVOTIS with EVO Cam II

- ✓ Large field of view system
- ✓ 5.5x to 300x magnification
- ✓ Compatible with EVO Cam objective lenses & accessories



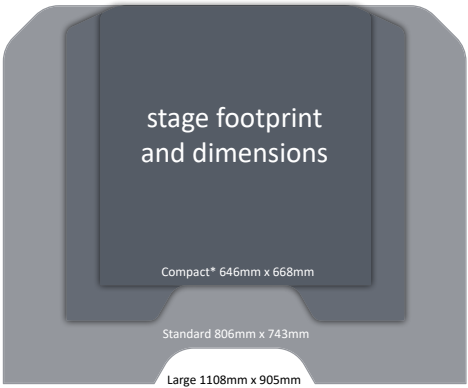
Common to both Lynx EVO and EVO Cam systems it allows a rotating oblique view of 34° from 360° around a feature as well as the expected direct view. Making it easy to see side details around features as well as the usual top surface. Especially useful for joints, holes, pillars and threaded forms.



The stable high capacity stages provide free floating movement for all sizes of board, including double sided PCB's. Stages enable easy inspection of difficult to handle items and can be locked for precision inspection tasks.

Key Features - EVOTIS

Free floating table: <ul style="list-style-type: none"><li>300mm x 250mm</li><li>460mm x 460mm</li></ul>
25° tilting wedge
Optional 28mm 'stand-off' kit
Available with compact, standard and large bases
Base board with ESD coating and earthing point



\*at extreme positions table will overhang base



Multiplier



Objective



360° rotating viewer

Key Features - EVOTIS with Lynx EVO

Eyepiece-less stereo view (3D)
3.7x – 180x magnification
360° rotating viewer
Compatible with Lynx EVO objectives and accessories
Image capture with SmartCam/SmartCam5 cameras
Accessories <ul style="list-style-type: none"><li>SmartCam/SmartCam5</li><li>Multipliers 1.5x and 2.0x</li><li>0.62x, 1.0x and 1.5x objectives</li></ul>

Maximum component height by objective

Objective	Max. Component Height
0.62x	47mm
1.0x	98mm
1.5x	106mm
360° viewer	84mm

Key Features - EVOTIS with EVO Cam II

Large zoom range camera
5.5x – 300x magnification
360° rotating viewer
Compatible with EVO Cam objectives and accessories
Stand alone or PC connection
Accessories <ul style="list-style-type: none"><li>0.62x and 1.0x objectives</li><li>Polarising filters</li><li>White/UV quadrant ring light</li><li>External keypad</li></ul>

Maximum component height by objective

Objective	Max. Component Height
0.62x	37mm
1.0x	74mm
1.5x	82mm
360° viewer	39mm



SmartCam

Vision Engineering is a global manufacturer of stereo & digital microscopes and non-contact measurement systems. Since 1958 the company has earned the reputation for its innovative and ergonomically designed products which are used by the World’s best companies.

Distributor

CE

Disclaimer – Vision Engineering Ltd. has a policy of continuous development and reserves the right to change or update, without notice, the design, materials or specification of any products, the information contained within this brochure/datasheet and to discontinue production or distribution of any of the products described.

**Vision Engineering Ltd.**  
**(UK Manufacturing & Commercial)**  
The Freeman Building  
Galileo Drive, Send, Surrey  
GU23 7ER, UK  
Tel: +44 (0) 1483 248300  
Email: [generalinfo@visioneng.com](mailto:generalinfo@visioneng.com)

**Vision Engineering Inc.**  
**(NA Manufacturing & Commercial)**  
570 Danbury Road,  
New Milford, CT 06776, USA  
Tel: +1 (860) 355 3776  
Email: [info@visioneng.com](mailto:info@visioneng.com)

**Vision Engineering Ltd.**  
**(Central Europe)**  
Anton-Pendle-Str. 3,  
82275 Emmering, Deutschland  
Tel: +49 (0) 8141 40167-0  
Email: [info@visioneng.de](mailto:info@visioneng.de)

**Vision Engineering Ltd.**  
**(France)**  
ZAC de la Tremblaine,  
Av. de la Tremblaine  
91220 Le Plessis Paté, France  
Tel: +33 (0) 160 76 60 00  
Email: [info@visioneng.fr](mailto:info@visioneng.fr)

**Vision Engineering Ltd.**  
**(Italia)**  
Via G. Paisiello 106  
20092 Cinisello Balsamo MI, Italia  
Tel: +39 02 6129 3518  
Email: [info@visioneng.it](mailto:info@visioneng.it)

**Nippon Vision Engineering**  
**(Japan)**  
272-2 Saedo-cho, Tsuduki-ku,  
Yokohama-shi, 224-0054, Japan  
Tel: +81 (0) 45 935 1117  
Email: [info@visioneng.jp](mailto:info@visioneng.jp)

**Vision Engineering**  
**(China)**  
Room 904B, Building B, No.970,  
Nanning Road, Xuhui Vanke Center  
Shanghai, 200235, P.R. China  
Tel: +86 (0) 21 5036 7556  
Email: [info@visioneng.com.cn](mailto:info@visioneng.com.cn)

**Vision Engineering**  
**(South East Asia)**  
P-03A-20, Impian Meridian,  
Jalan Subang 1,  
USJ 1, 47600 Subang Jaya,  
Selangor Darul Ehsan, Malaysia  
Tel: +604-619 2622  
Email: [info@visioneng.asia](mailto:info@visioneng.asia)

**Vision Engineering**  
**(India)**  
Tel: +91 (0) 80-5555-33-60  
Email: [info@visioneng.co.in](mailto:info@visioneng.co.in)

**Vision Engineering**  
**(Brasil)**  
Email: [info@visioneng.com.br](mailto:info@visioneng.com.br)

**Vision Engineering**  
**(Mexico)**  
Tel: +01 800 099 5325  
Email: [info@visioneng.com](mailto:info@visioneng.com)

www.visioneng.com