



www.jbctools.com

INSTRUCTION MANUAL



NH

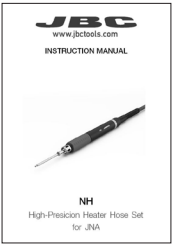
High-Precision Heater Hose Set
for JNA

This manual corresponds to the following references:

NH-A

Packing List

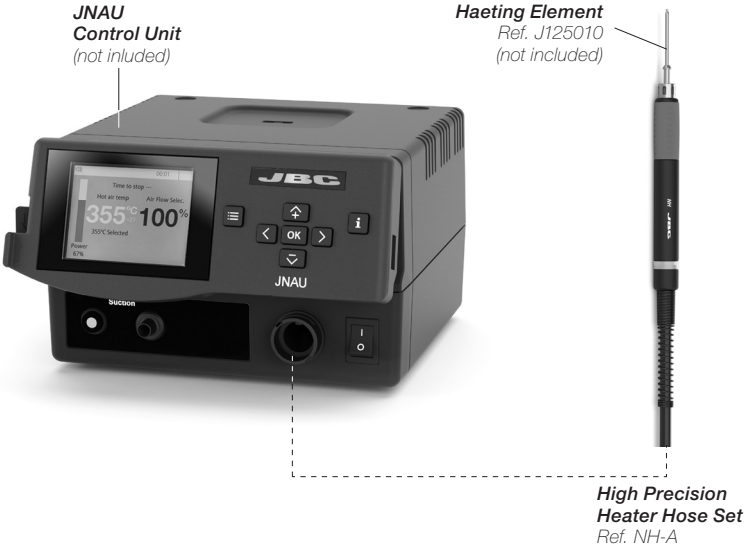
The following items are included:



High-Precision Heater Hose Set 1 unit

Manual 1 unit
Ref. 0026662

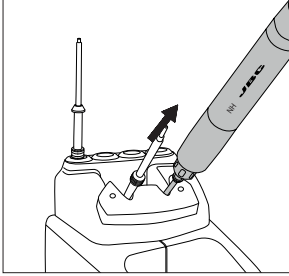
Features and Connections



Changing Heating Element

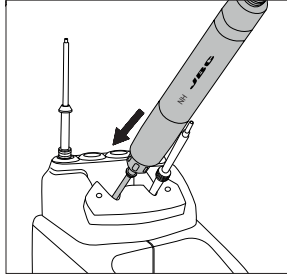
Save time and change the heating element safely without switching the station off.

1. Removing



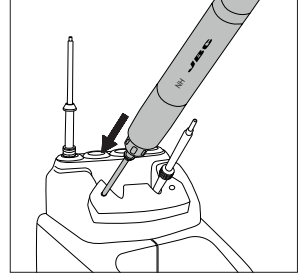
Place the heating element in the extractor and pull the handle to remove it.

2. Inserting



Place the handpiece on top of the new heating element and press down slightly.

3. Fixing



Use the holes to fix the heating element.

*Important

It is essential to insert the heating element far as the mark for a proper connection.

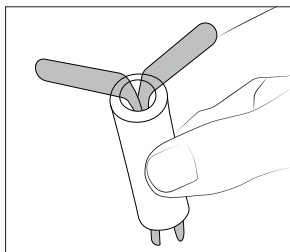


Compatible Accessories *(Not included)*

Grips for NH High Precision Heater Hose Set *(Ref. 0024473)*

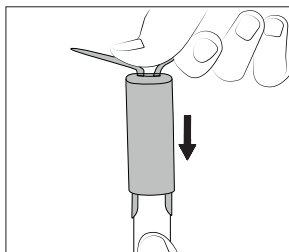
Soft foam grips ensure a better manual control of the tool and greater comfort when working. Easily replace the grips using the slip-on tabs.

1. Inserting Tabs



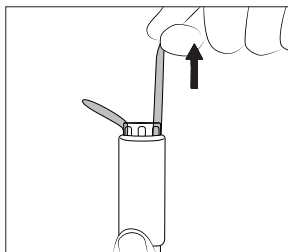
Insert the slide-on tabs into the new grip.

2. Inserting Handle



Push the grip with the tabs onto the handle.

3. Removing Tabs

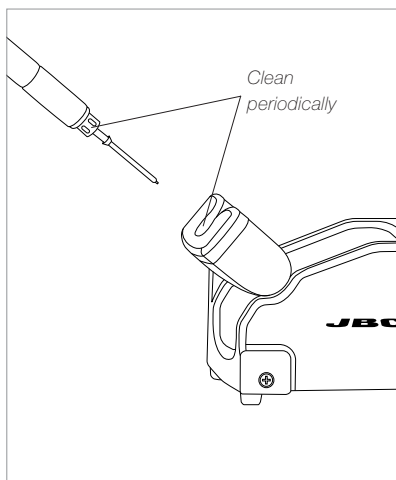


Hold the grip and pull them out. Use a pliers if necessary.

Maintenance

Before carrying out maintenance or storage, always unplug the stand from the station and the tool.

- Use a damp cloth to clean the stand. Alcohol can be used only when cleaning the metal parts.
- Check periodically that the metal parts of the tool/stand are clean so that the station can check the tool's status.
- Periodically check all cables and tube connections.
- Replace any defective or damaged parts. Use original JBC spare parts only.
- Repairs should only be performed by a JBC authorized technical service.



Safety



It is imperative to follow safety guidelines to prevent electric shock, injury, fire or explosion.

- Do not use the stands for any purpose other than soldering or rework.
- The power cord must be plugged into approved bases. Be sure that it is properly grounded before use. When unplugging it, hold the plug, not the wire.
- The tool should be placed in the stand when is not in use in order to activate the sleep mode. The soldering tip, the metal part of the tool and the stand may still be hot even when the station is turned off. Handle with care, including when adjusting the stand position.
- Avoid the contact of flux with skin or eyes to prevent irritation.
- Be careful with the fumes produced when soldering.
- Keep your workplace clean and tidy. Wear appropriate protection glasses and gloves when working to avoid personal harm.
- Utmost care must be taken with liquid tin waste which can cause burns.
- This appliance can be used by children over the age of eight and also persons with reduced physical, sensory or mental capabilities or lack of experience provided that they have been given adequate supervision or instruction concerning use of the appliance and understand the hazards involved. Children must not play with the appliance.
- Maintenance must not be carried out by children unless supervised.

Notes

This image shows a single sheet of white paper with horizontal ruling lines. The lines are evenly spaced and run across the width of the page. There are no margins, text, or other markings on the paper.

Notes

This image shows a single sheet of white paper with horizontal ruling lines. The lines are evenly spaced and run across the width of the page. There are no margins, text, or other markings on the paper.

Specifications

NH

High-Precision Heater Hose Set for JNA

Ref.: **NH-A**

- Net Weight 0.31 kg / 0.69 lb
- Total Package Dimensions/Weight: 382 x 159 x 81 mm / 0.45 kg
(L x W x H) 13.46 x 6.10 x 4.72 in / 0.98 lb

Complies with CE standards
ESD protected

JBC

Warranty

JBC's 2 year warranty covers this equipment against all manufacturing defects, including the replacement of defective parts and labour.

Warranty does not cover product wear or misuse.

In order for the warranty to be valid, equipment must be returned, postage paid, to the dealer where it was purchased.

Get 1 extra year JBC warranty by registering here:
<https://www.jbctools.com/productregistration/>
within 30 days of purchase.



This product should not be thrown in the garbage.

In accordance with the European directive 2012/19/EU, electronic equipment at the end of its life must be collected and returned to an authorized recycling facility.



www.jbctools.com