



PCB Magazines

NIKKO™ Super Racks



● RUBRÖDER GMBH ●
FACTORY AUTOMATION

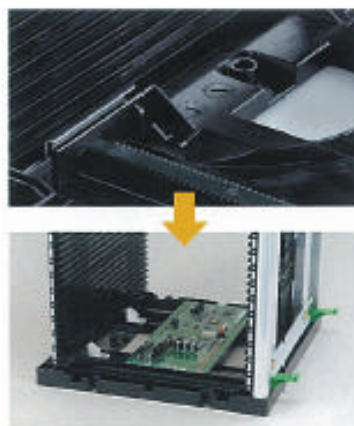
-Ultralight-

Reversible Magazines
N25C, R25C, SR25C

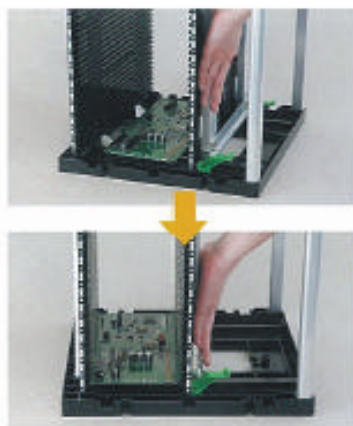


- ▶ Magazines for highest efficiency and best performance
- ▶ Quick width adjustment in less than 5 seconds due to rack and pinion system and preinstalled ramp system
- ▶ Highest stability and 70% faster assembly due to intelligent design
- ▶ Durable plastic base, 30% stronger than the industry standard
- ▶ Different types of magazines with cardguides that have different heat resistances.
- ▶ ESD Safety
- Options:
 - ▶ Stopper bars
 - ▶ Labels with slot numbers

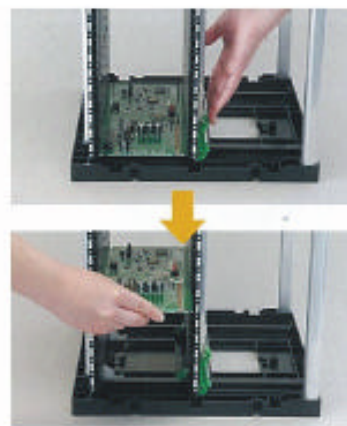
Caution: The listed temperatures apply only to the cardguides. Magazines of these types should not be placed in ovens.



Put the PCB on the center of the base.



Slide the movable side towards the PCB until it cannot slide any further.



Lock all four levers and remove the PCB. The PCB will now slide smoothly into each slot with 1 mm clearance.

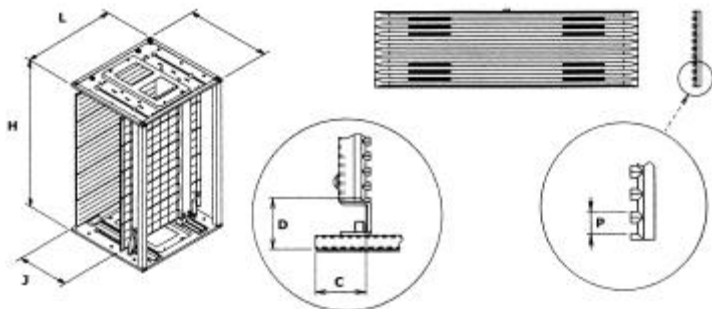
PCB MAGAZINES

Model	Max. Temp. Leiterplatte	Outer dimensions in mm			Width adjustment J	Bases	Pitch P	PCB Slots	Reference position		Weight	Size
		L	B	H					C	D		
N25C	60°C	355	320	563	50 ~ 250	Plastic	10	50	34	34	4 kg	M
R25C	135°C	355	320	563	50 ~ 250	Plastic	10	50	34	34	4 kg	M
SR25C	165°C	355	320	563	50 ~ 250	Plastic	10	50	34	34	4 kg	M

-Ultralight- Stackable Magazines T25C



Magazine Dimensions:



- ▶ Vertically and horizontally stackable
- ▶ High durability and stability as well as extremely fast assembly due to intelligent design
- ▶ Different magazine types with different heat resistance of the plastic card guides and therefore lead free process compatibility.
- ▶ ESD Safety
- ▶ Quick width adjustment within less than 5 seconds due to rack and pinion system and preinstalled ramp system
- Options:
 - ▶ Stopper bars
 - ▶ Labels with slot numbers

Caution: The listed temperatures apply only to the cardguides. Magazines of this type should not be placed in ovens.

Model	Max. Temp. Leiterplatte	Outer dimensions in mm			Width adjustment J	Bases	Pitch P	PCB Slots	Reference Position		Weight	Size
		L	B	H					C	D		
T25C	135°C	355	320	581	50~250	Plastic	10	50	35	35	4,1 kg	M