



www.jbctools.com

INSTRUCTION MANUAL



CL8010, CL0240

Wiper for
Manual Tip Cleaner

This manual corresponds to the following references:

CL8010 - *red*

CL0240 - *black*

Packing List

The following items are included:



Wiper for Manual Tip Cleaner 1 unit

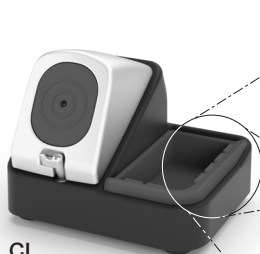


Manual 1 unit

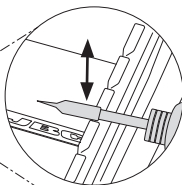
Ref. 0029715

Features

CL8010 and CL0240 are used in JBC's CL manual tip cleaner

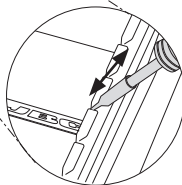


CL
Manual Tip Cleaner



Tapping

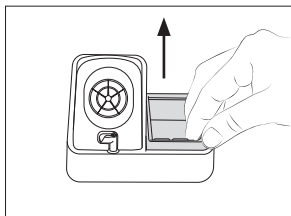
Tap to remove excess solder.



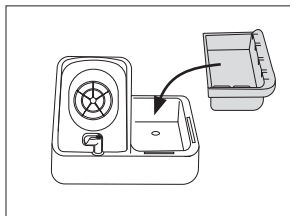
Wiping

Use the slots to remove remaining particles.

Wiper Replacement



First pull the wiper out.



Then inset the new one.

Specifications

CL8010, CL0240

Wiper for Manual Tip Cleaner

Ref. **CL8010** - *red*

Ref. **CL0240** - *black*

- Total Net Weight: 26 g / 0.057 lb
- Package Dimensions/Weight: 60 x 55 x 40 mm / 34 g
(W x L x H) 2.36 x 2.17 x 1.57 in / 0.075 lb

ESD safe

JBC

Warranty

JBC's 2 year warranty covers this equipment against all manufacturing defects, including the replacement of defective parts and labour.

Warranty does not cover product wear or misuse.

In order for the warranty to be valid, equipment must be returned, postage paid, to the dealer where it was purchased.



This product should not be thrown in the garbage.

In accordance with the European directive 2012/19/EU, electronic equipment at the end of its life must be collected and returned to an authorized recycling facility.



www.jbctools.com

0029715-070323