



[www.jbctools.com](http://www.jbctools.com)

## INSTRUCTION MANUAL



# Hot Air Station

Ref. JNASE-A

# Packing List

The following items are included:

<b>JNASE Control Unit</b> .....1 unit Ref. JNASE-A (85V -265V)	<b>Stand</b> .....1 unit Ref. NA-SA	<b>Heater hose set</b> .....1 unit Ref. NH-A
---	--	---



<b>Pedal</b> ..... 1 unit Ref. P-405	<b>Pick &amp; Place</b> ..... 1 unit Ref. T260-A	<b>Thermocouple Type K</b> ..... 1 unit Ref. PH218
---	---	---



<b>Bent Needles Set</b> ..... 1 unit Ref. 0861660	<b>Straight Needles Set</b> ..... 1 unit Ref. 0901546	<b>Cups Set</b> .....1 unit Ref. 0940163	<b>Kapton Tape</b> ... 1 unit Ref. PH217
--	--	---	---



<b>Power cord</b> ..... 1 unit Ref. 0023715 (100V/120V) 0023714 (230V)	<b>Heating element</b> .....1 unit Ref. J115-010	<b>Cartridge holder</b> ..... 1 unit Ref. SCH-A	<b>Manual</b> .....1 unit Ref. 0024293
--	---	--	---



## Features and connection

2,8" Color  
TFT screen

Activates the  
suction pump

Pick and place  
connection

Heating element  
REF. J115-010

USB-A  
connector

Main switch

Heater Hose set  
Ref. NH-A

Thermocouple type K

Stand  
Ref. NA-SA

Power Socket

Equipotential  
connector

P-405 Pedal  
connector

Auxiliar  
connector

Robot RS232  
connector

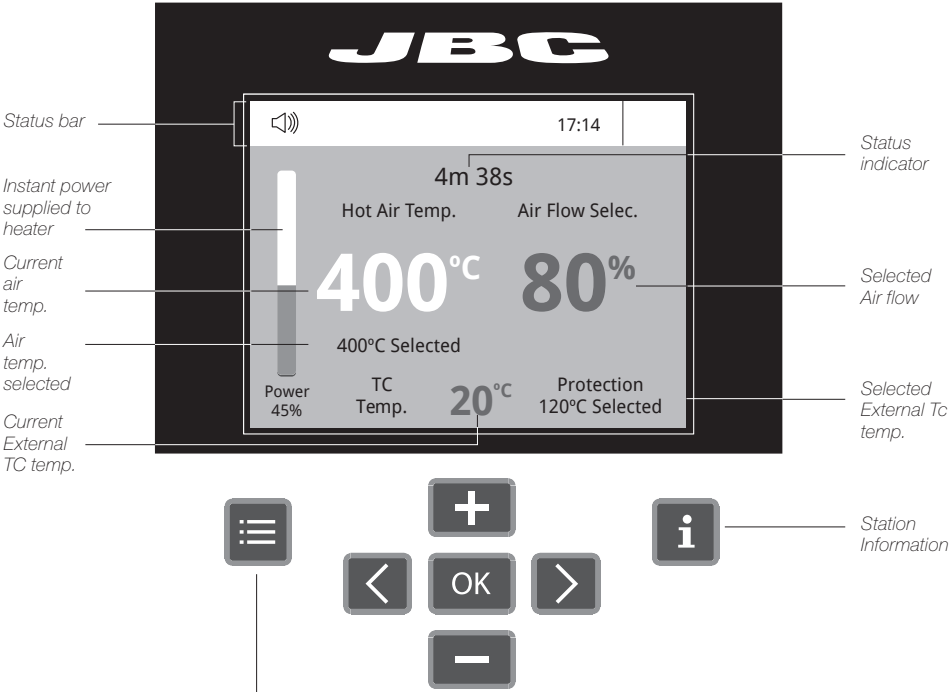
Fuse

USB connector



# JNASE Work Screen

The JNASE offers an **intuitive user interface** which provides **quick access** to station parameters.  
**Default PIN: 0105**



## Menu Options



Set the station parameters

**Station**



Set the tool parameters

**Tools**



Display the hours worked in each cycle

**Counters**



It is possible to choose the language from a list.

**Language**



Allows you to carry out an overall station reset restoring all the parameters to their default values.

**Reset**

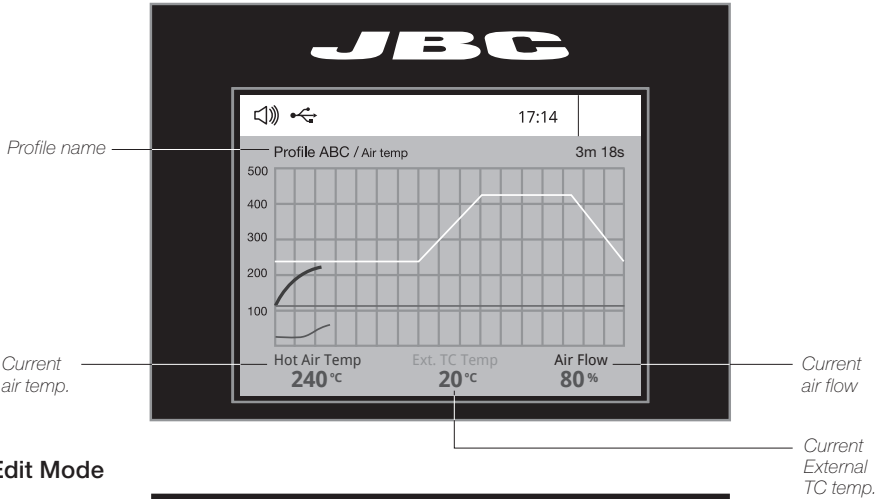
## Advanced functionalities



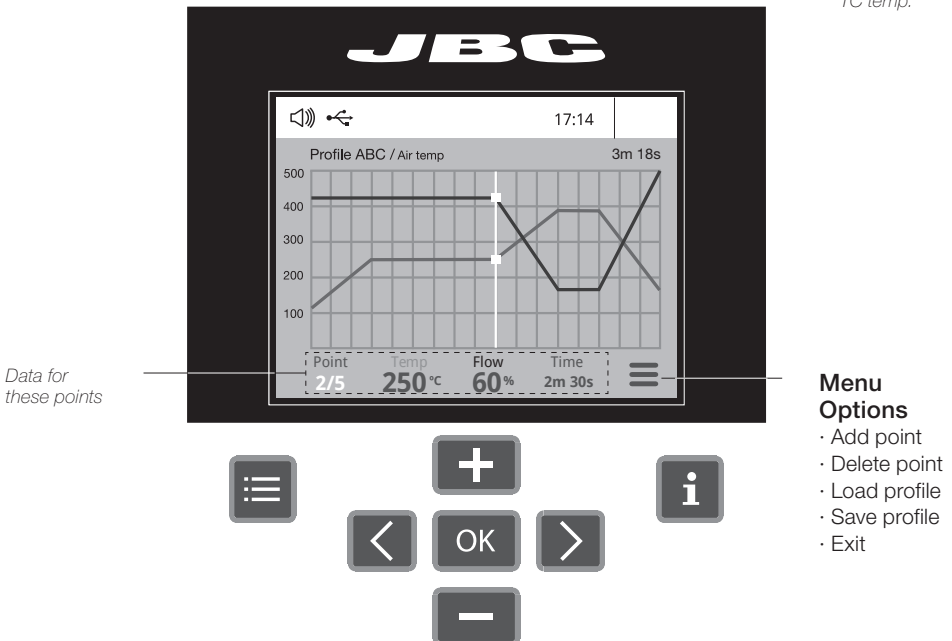
### Profiles

To work with profiles it is essential to use the rework arms. The Rework Arms supports the Hot Air Heater maintaining the distance and position to the component.

In this mode you can **set up or edit** as many as 25 profiles of temperature and air flow.



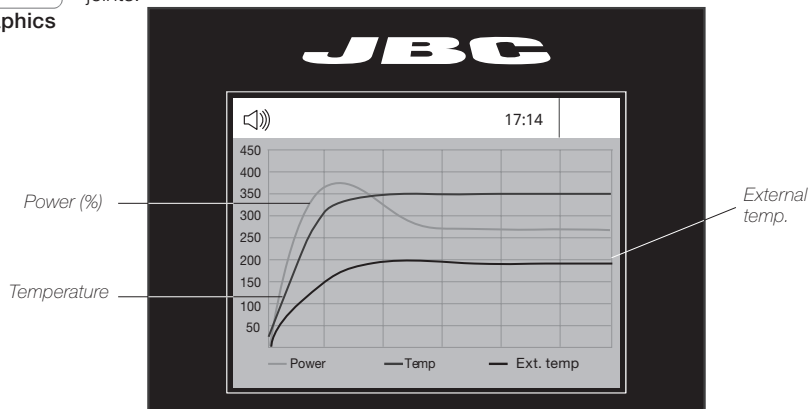
### Edit Mode





Graphics

By pressing **Graphics** in the main MENU, temperature and power figures in real time are displayed. This helps you decide which tip to use to obtain the best quality solder joints.



### The first system to optimize traceability in soldering

- Get greater quality and control in your production
- Manage your whole soldering process remotely in real time



Files

### Export graphics

Insert a USB flash drive into the USB-A connector to save your soldering process in csv format.



Update

### Station update

Download the JBC Update File from [www.jbctools.com/software.html](http://www.jbctools.com/software.html)  
Insert the USB flash drive with the file downloaded to the station.



## System notifications

The following icons will be displayed on the screen's status bar.



USB flash drive is connected.



Station software update.  
Press INFO to start the process.



Station is controlled by a PC.



Warning.  
Press INFO for failure description.



Station is controlled by a robot.



Error.  
Press INFO for failure description, the type of error and how to proceed.

## Pick & Place

This tool helps you place and remove SMDs of any size easily thanks to the suction pump.

**Pick & Place**  
Ref. T260-A



**Bent Needles Set**  
Ref. 0861660

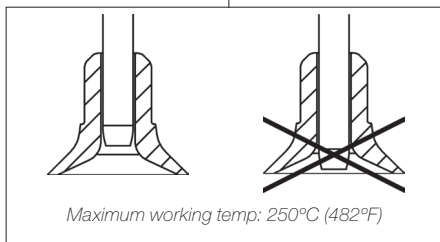
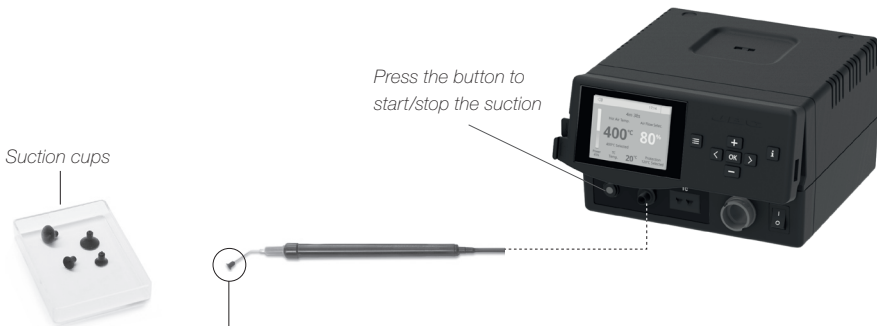


**Straight Needles Set**  
Ref. 0901546



## Operation

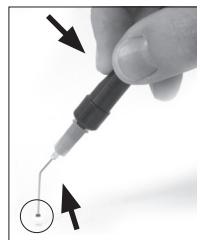
Choose the needle and the suction cup that best fits the component and start as follows:



Insert the needle with the appropriate cup for a correct suction process.

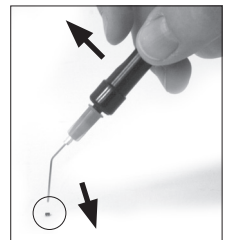
Make sure the needle does not protrude from the cup.

### 1. Suction



Once the suction is activated, cover the pen hole with your finger and lift off the component.

### 2. Release



Lift your finger to release the component.

# Using the Thermocouple type K

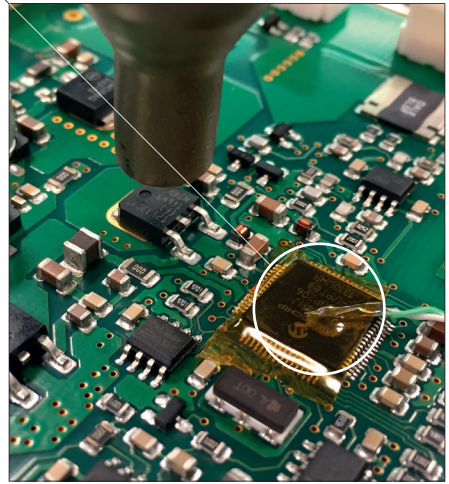
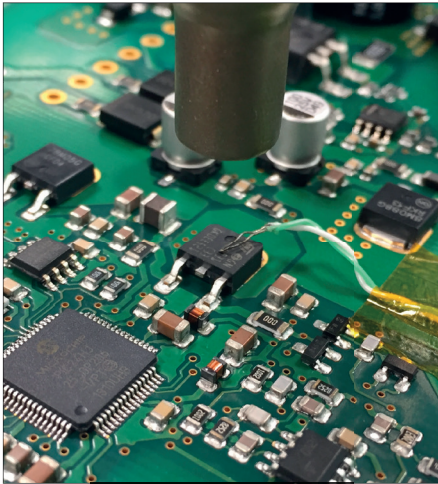
Connect a TC type K (PH218) to the station and use it as a protection or regulation sensor. You can define its use mode by means of the “Ext TC mode” option in the “Tool” menu.

You can choose from **two work modes**:

**Regulation:** the station regulates the air temperature automatically to maintain the External Thermocouple (TC) temperature.

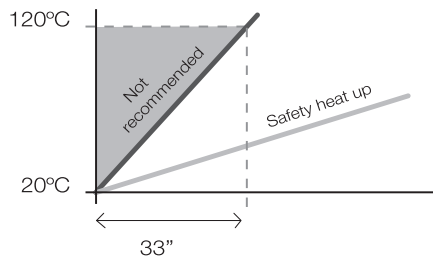
**Protection:** the station cuts the air supply off when the External Thermocouple (TC) temperature is reached.

*Fix the TC with Kapton Tape (Ref. PH217) as near as possible to the component being worked on. If Kapton tape is not ESD you must use an ionizer.*



IPC\* does not recommend exceeding ramp-up rates over 3-4°C / sec. (5-7°F / sec) so as to reduce the risk of thermal stress on the PCB.

\* IPC was founded in the U.S. in 1957 as the Institute for Printed Circuits.





## Maintenance

Before carrying out maintenance, always allow the equipment to cool.

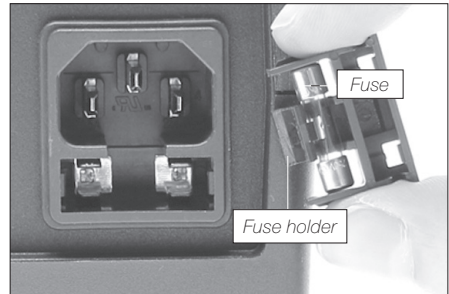
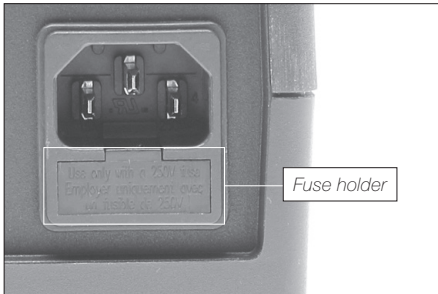
- Clean the station screen with a glass cleaner or a damp cloth.
- Use a damp cloth to clean the casing and the tool. Alcohol can only be used to clean the metal parts.
- Periodically check that the metal parts of the tool and stand are clean so that the station can detect the tool status.
- Periodically check all cables and tubes.
- Replace a blown fuse as follows:

*Clean periodically*



1. Pull off the fuse holder and remove the fuse. If necessary use a tool to lever it off.

2. Insert the new fuse into the fuse holder and return it to the station.



- Replace any defective or damaged pieces. Use original JBC spare parts only.
- Repairs should only be performed by a JBC authorized technical service.

## Safety



**It is imperative to follow safety guidelines to prevent electric shock, injury, fire or explosion.**

- Do not use the units for any purpose other than soldering or rework. Incorrect use may cause fire.
- The power cord must be plugged into approved bases. Make sure that it is properly grounded before use. When unplugging it, hold the plug, not the wire.
- Do not work on electrically live parts.
- The tool should be placed in the stand when not in use to turn off the hot air.  
The soldering tip, the metal part of the tool and the stand may still be hot even when the station is turned off. Handle with care, including when adjusting the stand position.
- Do not leave the appliance unattended when it is on.
- Do not cover the ventilation grills. Heat can cause inflammable products to ignite.
- Avoid the contact of flux with skin or eyes to prevent irritation
- Be careful with the fumes produced when soldering.
- Keep your workplace clean and tidy. Wear appropriate protection glasses and gloves when working to avoid personal harm.
- Utmost care must be taken with liquid tin waste which can cause burns.
- This appliance can be used by children over the age of eight and also persons with reduced physical, sensory or mental capabilities or lack of experience provided that they have been given adequate supervision or instruction concerning use of the appliance and understand the hazards involved. Children must not play with the appliance.
- Maintenance must not be carried out by children unless supervised.

有害物质含量表

产品中有害物质的名称及含量

部件名称	有害物质					
	铅(Pb)	汞(Hg)	镉(Cd)	六价铬 (Cr(VI))	多溴联苯 (PBB)	多溴二苯醚 (PBDE)
烙铁头	O	O	O	O	O	O
手柄	O	O	O	O	O	O
电源线	O	O	O	O	O	O
主机	O	O	O	O	O	O
电源插座	O	O	O	O	O	O
保险丝	O	O	O	O	O	O
主开关	O	O	O	O	O	O
电位连接	X	O	O	O	O	O
变压器	O	O	O	O	O	O
线路板	X	O	O	O	O	O
O 表示该有害物质在该部件所有均质材料中的含量均在GB/T 26572 规定的限量要求以下。 X 表示该有害物质至少在该部件的某一均质材料中的含量超出GB/T 26572 规定的限量要求。						

# Specifications

**JNASE-A** 85V - 265V 50/60Hz. Main fuse: T2A.

- Nominal power: 70W
- Temperature selection: Room temp. / 150 - 450 °C (300 - 840 °F)  
Cool mode: T off. Used to blow air at room temperature
- Ambient operating temp.: 10 - 50 °C (50 - 122 °F)
- Air flow regulation: 0,15 - 1 SLPM
- Vacuum: 53% / 397 mmHg / 15,6 inHg
- Connectors: USB-A / USB-B  
RJ12 for RS232  
Pedal / Stand
- Control Unit Weight: 1,346 kg (2.96 lb)
- Control Unit Dimensions: 170 x 180 x 110 mm (6.7 x 7.1 x 4.3 in)
- Total Package: 370 x 370 x 200 mm / 4,062 kg  
14.6 x 14.6 x 7.9 in / 8.95 lb

Complies with CE standards.  
ESD protected.

## JBC

### Warranty

JBC's 2 year warranty covers this equipment against all manufacturing defects, including the replacement of defective parts and labour.

Warranty does not cover product wear or misuse.

In order for the warranty to be valid, equipment must be returned, postage paid, to the dealer where it was purchased.

**Get 1 extra year JBC warranty by registering here:**

**<https://www.jbctools.com/productregistration/>**  
**within 30 days of purchase.**



This product should not be thrown in the garbage.

In accordance with the European directive 2012/19/EU, electronic equipment at the end of its life must be collected and returned to an authorized recycling facility.



**[www.jbctools.com](http://www.jbctools.com)**