

Corriplast® Collapsible Tote

GWP Conductive > Corriplast® > Conductive Collapsible Tote

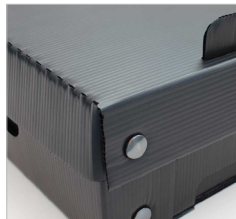


Fold-flat plastic tote

Award winning Corriplast® Collapsible Tote

These collapsible totes offer performance levels comparable with moulded plastic yet are considerably more cost effective, with the lower unit prices and longevity combining to offer an excellent lifetime / cost ratio. Being able to collapse completely flat also reduces transport costs and storage requirements.

Besides enhanced lifespan, the durable conductive Correx® material offers excellent ESD & physical protection. The smooth surfaces are easy to clean, allowing a further increased lifespan (plus clean room use).



Features and benefits

Key benefits of Corriplast® Collapsible Totes

- Robust, rigid design protects contents during handling
- Six standard sizes are available from stock for instant dispatch
- Bespoke sizes / designs available on request
- Specific Volume Resistance $<10^3$ Ohm x cm
- Specific Surface Resistance $<10^4$ Ohm
- Compatible divider sets allow for efficient handling
- Can be supplied flat packed for easy storage / transit
- Inset handles to allow for ease of use
- Durable material ensures multiple uses
- Easy clean surfaces further enhance lifespan
- Suitable for clean room
- Minimised damages reduce returns, and replacements

Technical and performance

Corriplast® technical details

Performance

Conductive Corriplast is a type of Corrugated Plastic Board based on Polypropylene / Ethylene copolymers.

Grading is based on thickness and grammage weight. i.e. 3/450 is 3mm thick and 450 grammes per square metre.

Two grades are available from stock: 3/450 and 4/650

Corriplast is volume conductive, surface resistivity is less than 10^5 ohms squared.

Method 5.0 KV charge for 5 minutes at 40 RH = V

> Units seconds $V = 1/10 V=0$

> Conductive Black 0.27 0.53

Additional Information

Conductive Corriplast is chemically unreactive and is generally regarded as being biologically inert. There is no release of any noxious fumes from ambient temperatures. Although Conductive Corriplast is inert and can be regarded as harmless, certain boards do contain additives which could be harmful and any ingestion should be avoided. Conductive Corriplast is ideal for use in clean room applications or where a more durable material is needed.

Find out more & see alternative options at: kaisertech.co.uk

Corriplast® Collapsible Tote

GWP Conductive > Corriplast® > Conductive Collapsible Tote

Size table

Dimensions and product options

Please see below for a full list of model numbers, sizes, and additional information.

Brand	Part No.	Internal Size	External Size	Volume Res.	Surface Res.
Corriplast®	6000-431	378 x 276 x 102 mm	400 x 300 x 110 mm	<10 ³ Ohm	<10 ⁴ Ohm
Corriplast®	6000-432	378 x 276 x 212 mm	400 x 300 x 220 mm	<10 ³ Ohm	<10 ⁴ Ohm
Corriplast®	6000-433	378 x 276 x 283 mm	400 x 300 x 300 mm	<10 ³ Ohm	<10 ⁴ Ohm
Corriplast®	6000-641	578 x 378 x 102 mm	600 x 400 x 110 mm	<10 ³ Ohm	<10 ⁴ Ohm
Corriplast®	6000-642	578 x 378 x 212 mm	600 x 400 x 220 mm	<10 ³ Ohm	<10 ⁴ Ohm
Corriplast®	6000-643	578 x 378 x 283 mm	600 x 400 x 300 mm	<10 ³ Ohm	<10 ⁴ Ohm

Brand	Part No.	Internal Size
Corriplast®	6000-43 (Lid)	400 x 300 x 50mm
Corriplast®	6000-64 (Lid)	600 x 400 x 50mm

Stacking feature



Unique fastening system



Find out more & see alternative options at: [kaisertech.co.uk](https://www.kaisertech.co.uk)