

JBC

www.jbctools.com



Automatic Solder Feeder

Ref. SF

Packing List

The following items should be included:

SF Control Unit 1 unit
Ref. SF-110VA (100-120V)
SF-210VA (230V)



Solder Feed Handle 1 unit
Ref. SF280-A



Guide Set 1 unit
Ref. GSF10V - wire Ø 1 mm



Reel support 1 unit
Ref. 0018032
0018033
0003412 (x2)



Spanner 1 unit
Ref. 0017631



Allen key Ø 1,5 1 unit
Ref. 0741610



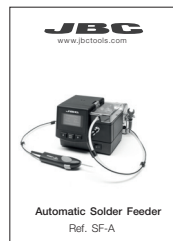
Allen key Ø 2,5 1 unit
Ref. 0012574



Power cable 1 unit
Ref. 0009417 (100V/120V)
0009401 (230V)



Manual 1 unit
Ref. 0018433



Features

Control Unit

Solder Feed Handle

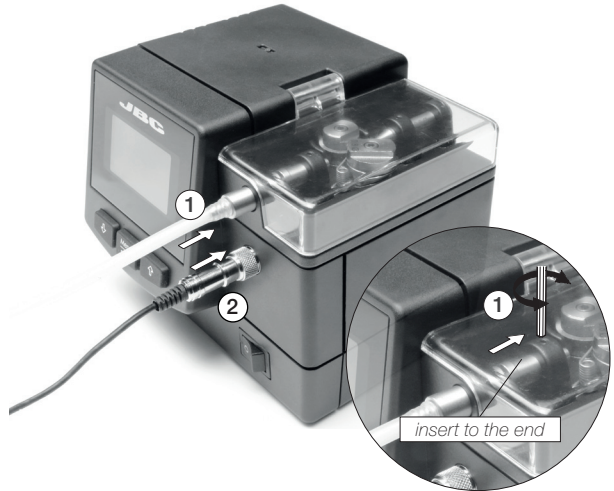
Ref. SF280-A



Tool assembly

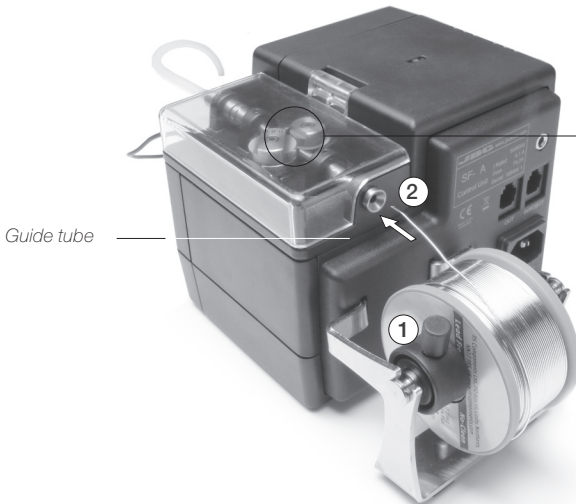
Connect the tool to the control unit.

1. Push the guide to the end and tighten the screw.
2. Connect the jackplug.



Load the solder wire

1. Use the lock rings to prevent the reel from sliding on the bar.
2. Feed the wire into the guide (2) until it reaches the drag wheels.



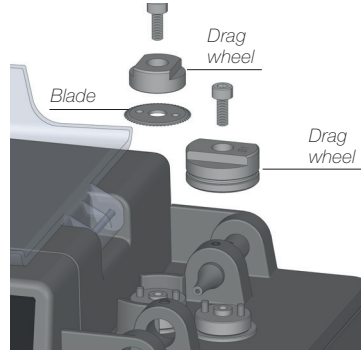
3. Press the button on the tool or the wire-load button on the station.
4. Make sure the wire passes through the tube.

Changing the drag wheels and the blade

1. Use the Allen key and the spanner to loosen the screws.



2. Replace the drag wheels and the blade with the new ones.



Fixing the guide tube

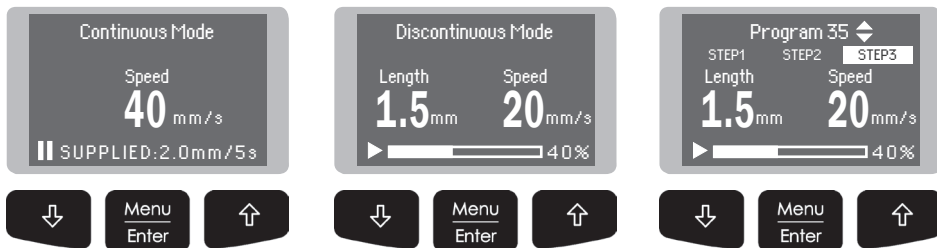
1. You can easily adjust the length of the tube by opening the guide clamp.



Control Process

Work Screen

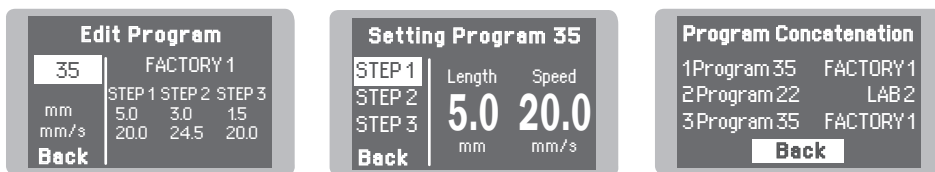
Choose between continuous, discontinuous and program mode:



Program mode

With the SF you can define up to 35 dynamic programs. In each one you can configure up to 3 steps with different length wire and dispensing speed.

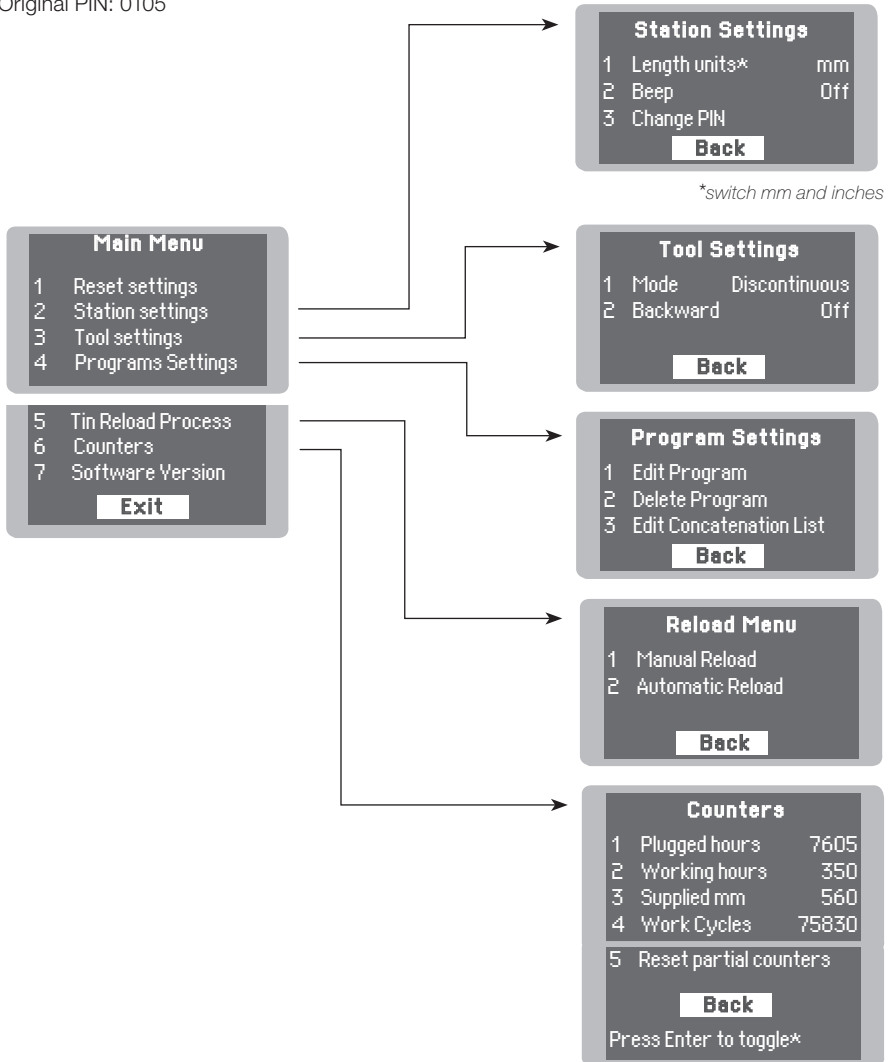
Execute them sequentially and cyclically with the 'Edit Concatenation List' option.



Control Process

Screen Menu

Original PIN: 0105



Accessories

Solder Feed Handle Stand

Ref. SF-SD



It prevents the SF280-A Solder Feed Handle from rolling away while working.

Guide Set

Ref. GSF08V - wire Ø 0,8 mm

Ref. GSF15V - wire Ø 1,5 mm



You can change the guide set depending on the solder wire used.

Maintenance

Before carrying out maintenance, always allow the equipment to cool down.

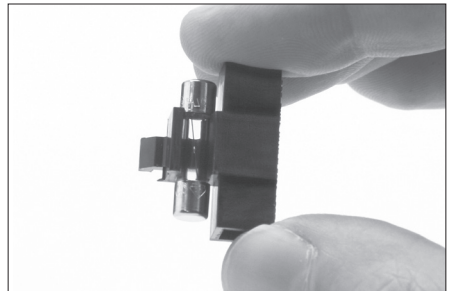
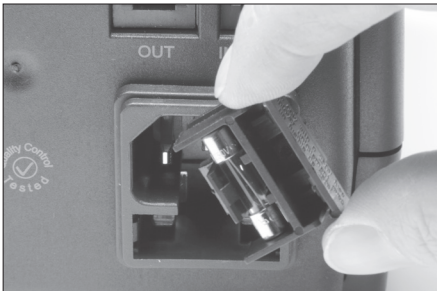
- Clean the station screen with a glass cleaner or a damp cloth.
- Use a damp cloth to clean the casing and the tool. Alcohol can only be used to clean the metal parts.
- Periodically check that the metal parts of the tool and stand are clean so that the station can detect the tool's status.
- Periodically check all cables and tubes.



- Replace a blown fuse as follows:

1. Pull off the fuse holder and remove the fuse. If necessary use a tool to lever it off.

2. Insert the new fuse into the fuse holder and return it to the station.



- Replace any defective or damaged pieces. Use original JBC spare parts only.
- Repairs should only be performed by a JBC authorized technical service.

Safety



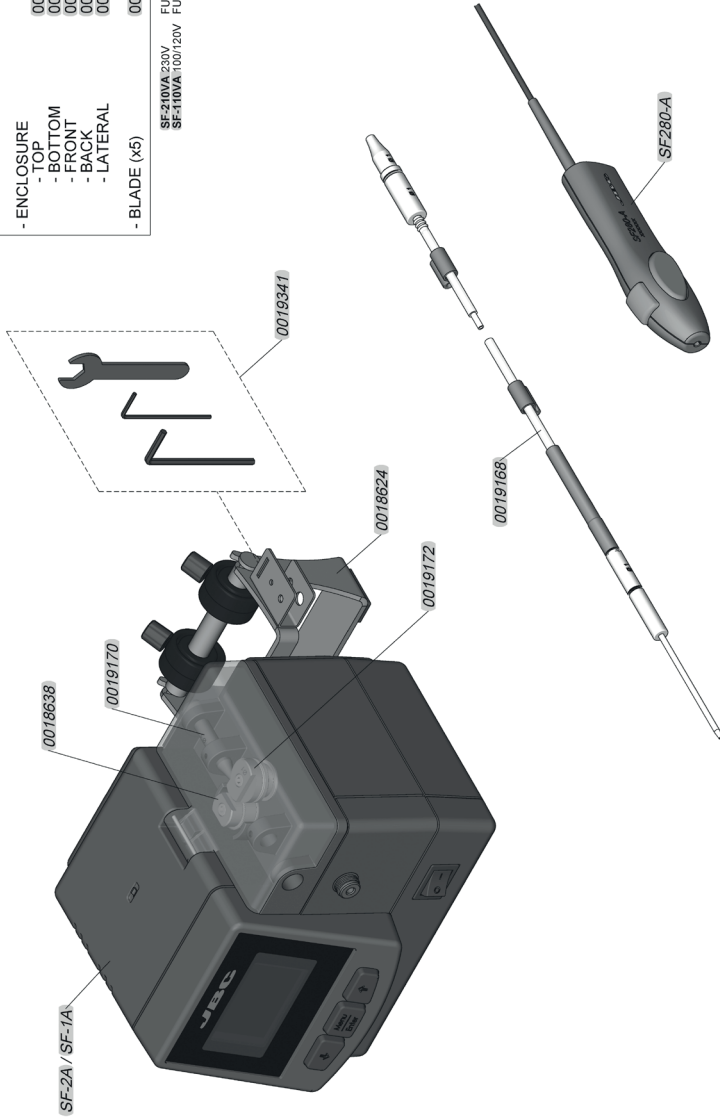
It is imperative to follow safety guidelines to prevent electric shock, injury, fire or explosion.

- Do not use the units for any purpose other than soldering or rework. Incorrect use may cause fire.
- The power cord must be plugged into approved bases. Make sure that it is properly grounded before use. When unplugging it, hold the plug, not the wire.
- Do not work on electrically live parts.
- The tool should be placed in the stand when not in use. Handle with care, including when adjusting the stand position.
- Do not leave the appliance unattended when it is on.
- Do not cover the ventilation grills. Heat can cause inflammable products to ignite.
- Avoid the contact of flux with skin or eyes to prevent irritation.
- Be careful with the fumes produced when soldering.
- Keep your workplace clean and tidy. Wear appropriate protection glasses and gloves when working to avoid personal harm.
- Utmost care must be taken with liquid tin waste which can cause burns.
- This appliance can be used by children over the age of eight and also persons with reduced physical, sensory or mental capabilities or lack of experience provided that they have been given adequate supervision or instruction concerning use of the appliance and understand the hazards involved. Children must not play with the appliance.
- Maintenance must not be carried out by children unless supervised.

Exploded View

| SPARE PARTS | |
|-----------------------|-------------------------------|
| SF-2A / SF-1A: | |
| - CIRCUITS: | 0018240 |
| - SF-2A | 0018744 |
| - SF-1A | |
| - ENCLOSURE | |
| - TOP | 0018021 |
| - BOTTOM | 0018019 |
| - FRONT | 0018020 |
| - BACK | 0018022 |
| - LATERAL | 0018023 |
| - BLADE (x5) | 0018635 |
| | SF-2A/VA 230V FUSE T-0.1A |
| | SF-110VA 100/120V FUSE T-0.2A |

SF-210VA 230V
SF-110VA 100/120V
AUTOMATIC SOLDER FEEDER



Specifications

SF-110VA 100-120V 50/60Hz. Input fuse: 0.2A.

SF-210VA 230V 50/60Hz. Input fuse: 0.2A.

- Weight: 1.9 Kg [4.2 lb]
- Dimensions: 150 x 120 x 115 mm [5.9 x 4.8 x 4.6 in]
- Spool capacity: up to 1 kg [2.2 lb]
- Solder diameter: Ø 1 mm [0.04 in]
- Voltage (AC) / Fuse: SF-110VA - 100-120 V / 0,2 A
SF-210VA - 230 V / 0,1 A
- Max. Wire length: 250 mm [9.84 in]
- Max. Forward speed: 120 mm/s [4.72 in/s]
- Max. Reverse speed: 120 mm/s [4.72 in/s]
- Ambient operating temp: 10 - 40 °C [50 - 104 °F]
- USB connector station-PC
- Robot connector

Complies with CE standards

ESD protected housing "skin effect"

JBC

Warranty

JBC's 2 year warranty covers this equipment against all manufacturing defects, including the replacement of defective parts and labour.

Warranty does not cover product wear or misuse.

In order for the warranty to be valid, equipment must be returned, postage paid, to the dealer where it was purchased.



This product should not be thrown in the garbage.

In accordance with the European directive 2002/96/EC, electronic equipment at the end of their life must be collected and returned to an authorized recycling facility.



Manual in other languages available on our website

www.jbctools.com

0018433-0217